

IF VIEWING THIS ON A PC PLEASE VIEW IN TWO PER PAGE. THIS IS LOCATED  
UNDER THE VIEW DROP DOWN.

THANK YOU,

ME



ALL



SEASON



RECREATION



# CONTENT

WHAT?

ACTIVE/ INACTIVE

SEASONS

LOST OPPORTUNITIES

PROGRAM

SITE

STUDIES



# WHAT?

THE CENTER IS A CELEBRATION OF CHICAGO'S UNIQUE SEASONAL OPPORTUNITIES  
AND WILL ENCOURAGE THE INHERENT ENTERTAINMENT NATURE PROVIDES.





# CASE STATEMENT



THE MAJORITY OF CHICAGOANS WILL AGREE THAT SUMMER TIME IS AMAZING IN THE CITY. THERE ARE AMPLE RECREATIONAL OPPORTUNITIES THROUGHOUT THE CITY WHILE THE BEACHES EXPLODE WITH ACTIVITY AND THE LAKEFRONT PATHS FLOW WITH A NEVER ENDING STREAM OF BIKERS, JOGGERS, AND TOURISTS. THESE SAME PLACES A FEW MONTHS LATER ARE COMPLETELY DESERTED LEAVING AMPLE OPPORTUNITIES UNFULFILLED.



# CASE STATEMENT

THE CAUSE OF THIS DESERTION IS DUE TO PEOPLE NOT HAVING THE EXPOSURE OR OPORTUNITY TO ENJOY THE WONDERFUL CYCLE OF SEASONS THIS CITY OFFERS. CHICAGO'S RECREATIONAL SEASON IS FOCUSED ENTIRELY ON THE SUMMER WHEN THE EVIDENCE OF PEOPLE WANTING TO ENJOY OTHER SEASONS IS RIGHT IN FRONT OF THEM AS CAN BE SEEN AT THE GRANT PARK OUTDOOR ICE RINK. ONE SIMPLY HAS TO LOOK AT CHILDREN SLEDDING DOWN A HILL COVERED IN SNOW GRINNING EAR TO EAR TO SEE THAT WINTER IS MORE THEN DREADING SNOW STORM TRAFFIC JAMS TO THOSE WHOM HAVE SOMETHING TO LOOK FORWARD TOO.





## PROJECT GOALS

- CREATE AN APPRECIATION FOR CHICAGO'S DIVERSE SEASONAL CYCLE
- PROVIDE RECREATIONAL OPORTUNITIES WHICH ARE LACKING IN THE CITY THROUGHOUT THE YEAR
- DEVELOP A CLOSER CONNECTION AND BETTER UNDERSTANDING BETWEEN PEOPLE AND THE ENVIRONMENT



## GUIDING PRINCIPLES

- EVERY ASPECT OF THE PROJECT IS TO CELEBRATE CHICAGO'S DIVERSE SEASONS
- CREATE ACCESSIBLE OPPORTUNITIES FOR UNIQUE EXPERIENCES
- RE-ESTABLISH THE CONNECTION BETWEEN NATURE AND THE BUILT ENVIRONMENT
- ALL SPACES TO HAVE USE THROUGHOUT THE YEAR - MULTIUSE
- BECOME A DESTINATION FOR THE COMMUNITY AND CITY
- PROVIDE FOR ALL AGES





**ACTIVE**

**PEOPLE BLANKET THE BEACHES IN THE SUMMER...**



**SNOW BLANKETS THE BEACHES IN THE WINTER...**





**ACTIVE**

**CHILDREN SIT IN SWINGS ALL SUMMER LONG...**





**INACTIVE**

**SNOW SITS IN SWINGS ALL WINTER LONG...**

**...IT DOESNT HAVE TO BE THIS WAY**







**EVERY WARM WEATHER ACTIVITY...**

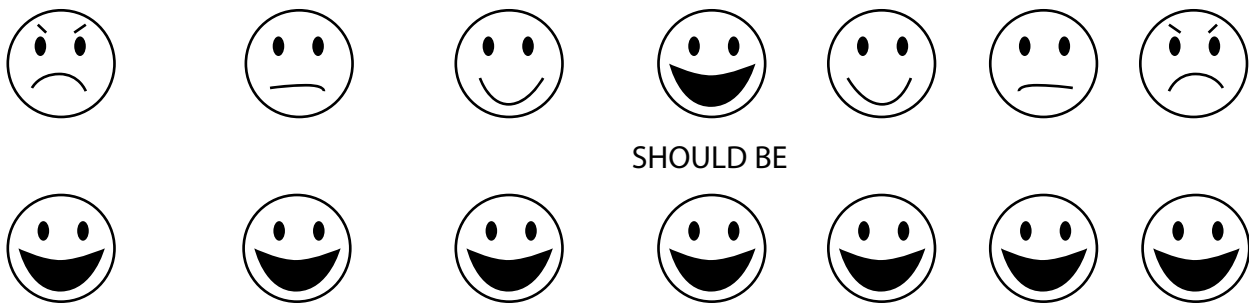
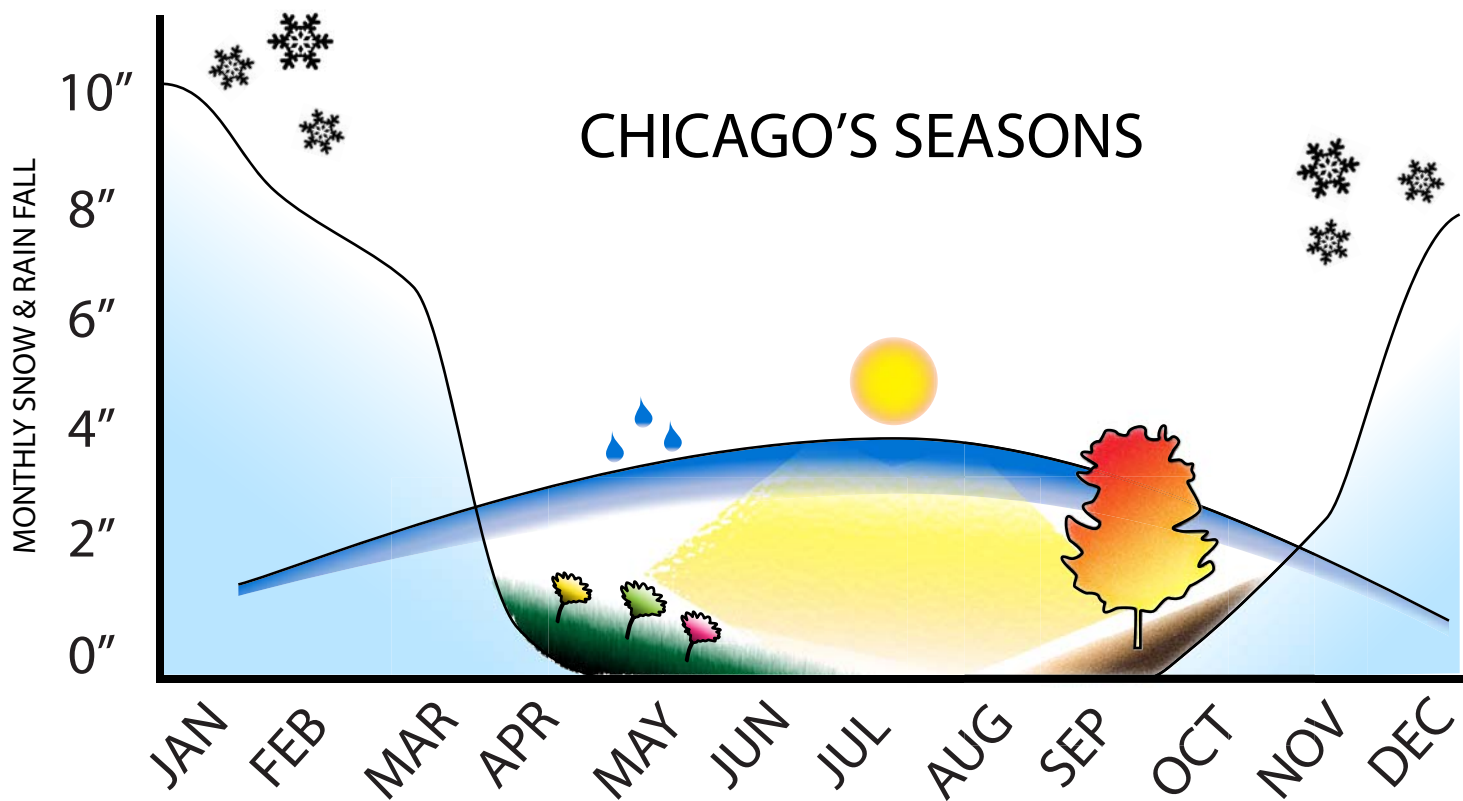




**HAS A COLD WEATHER COUNTER PART...**



# SEASONS



CHICAGO EXPERIENCES EACH SEASON IN A UNIQUE WAY BUT ONLY HAS EASY ACCESS TO ACTIVITIES WHICH WARMER WEATHER FACILITATES

ASPEN'S APPRECIATION  
OF SEASONS



AMPLE ACCESS TO UNIQUE RECREATIONAL  
ACTIVITY THROUGHOUT EVERY SEASON

CHICAGO'S APPRECIATION  
OF SEASONS

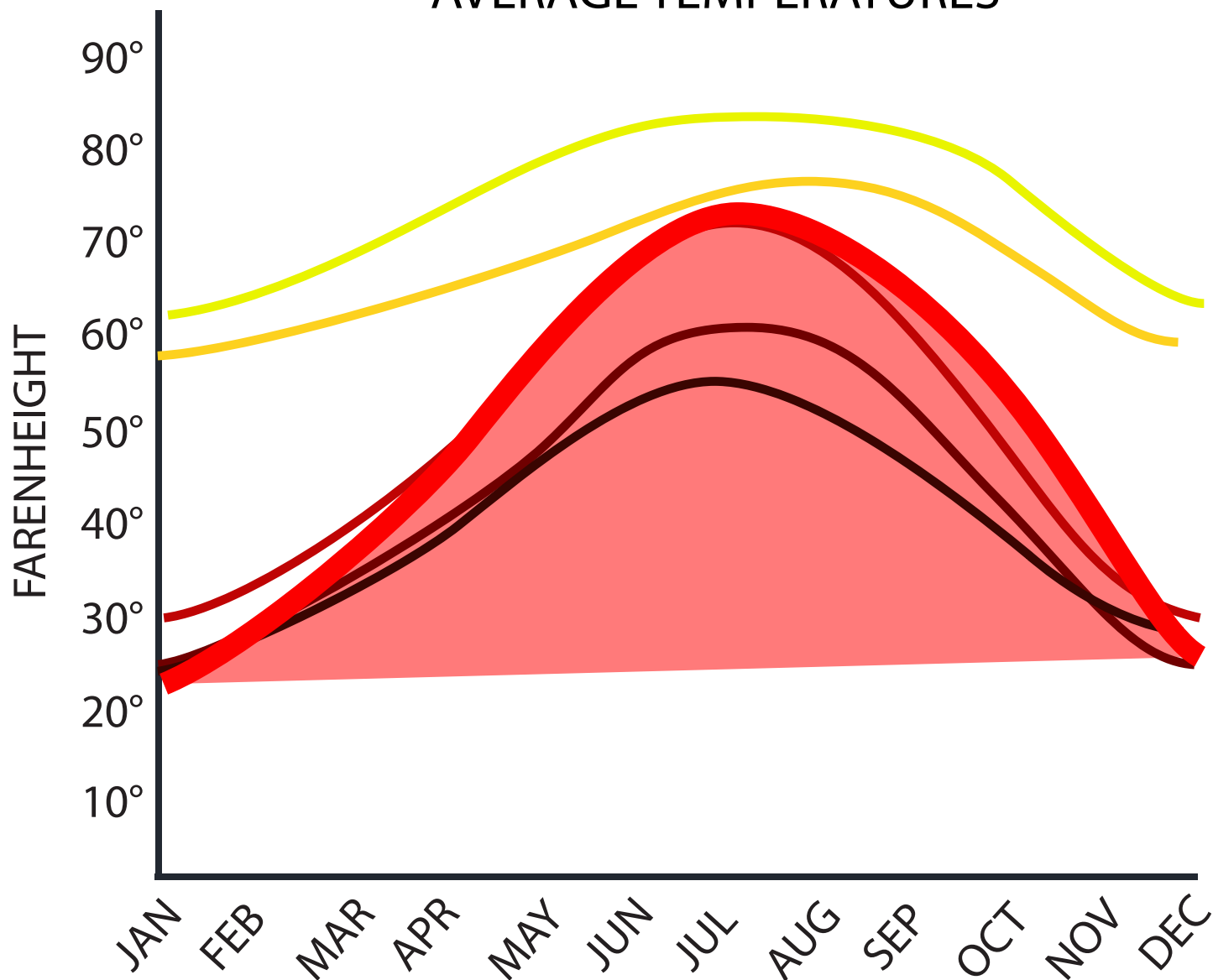


LIMITED ACCESS TO UNIQUE RECREATIONAL  
ACTIVITY THROUGH THE WARM SEASONS AND  
ALMOST NONE DURING THE WINTER



# LOST OPPORTUNITIES

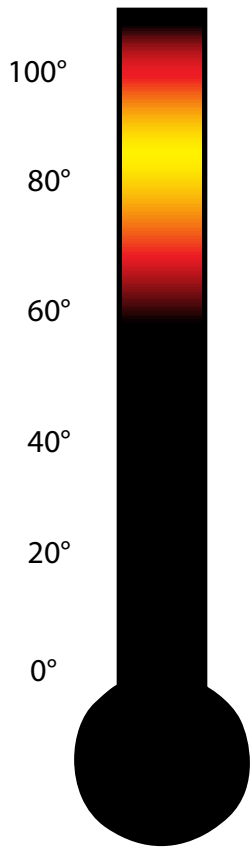
## AVERAGE TEMPERATURES



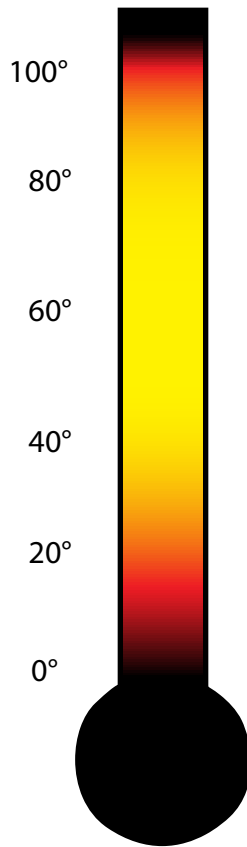
- TAMPA, FL
- SAN FRANCISCO, CA
- CHICAGO, IL
- DENVER, CO
- ASPEN, CO
- JUNEAU, AL

CHICAGO'S LATITUDE OF 41.90 PROVIDES AN EQUAL DISTRIBUTION OF AN EXTREMELY DIVERSE RANGE OF TEMPERATURES

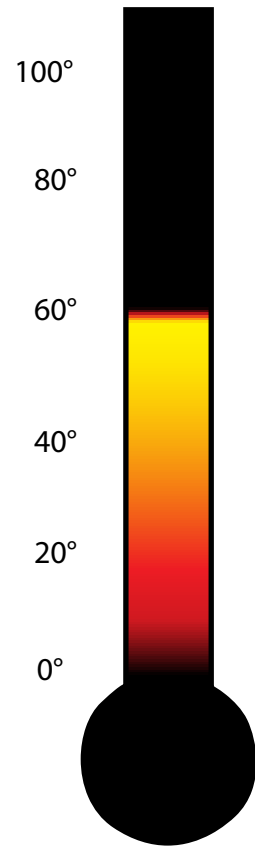
# ACTIVE RECREATION CLIMATE RANGE



CHICAGO, IL



ASPEN, CO



JUNEAU, AL

ASPEN HAS THE INFRASTRUCTURE TO SUPPORT YEAR ROUND ACTIVITY AND CAPITALIZES ON IT WITH PROGRAM HAPPENING ALL SEASON LONG. EVEN CITIES IN DRASTICALLY COLDER CLIMATES ENJOY A LARGER SPECTRUM OF THE TEMPERATURE RANGE. CHICAGO IS MISSING ITS OWN UNIQUE SEASONAL OPPORTUNITIES.

HIGH ACTIVITY



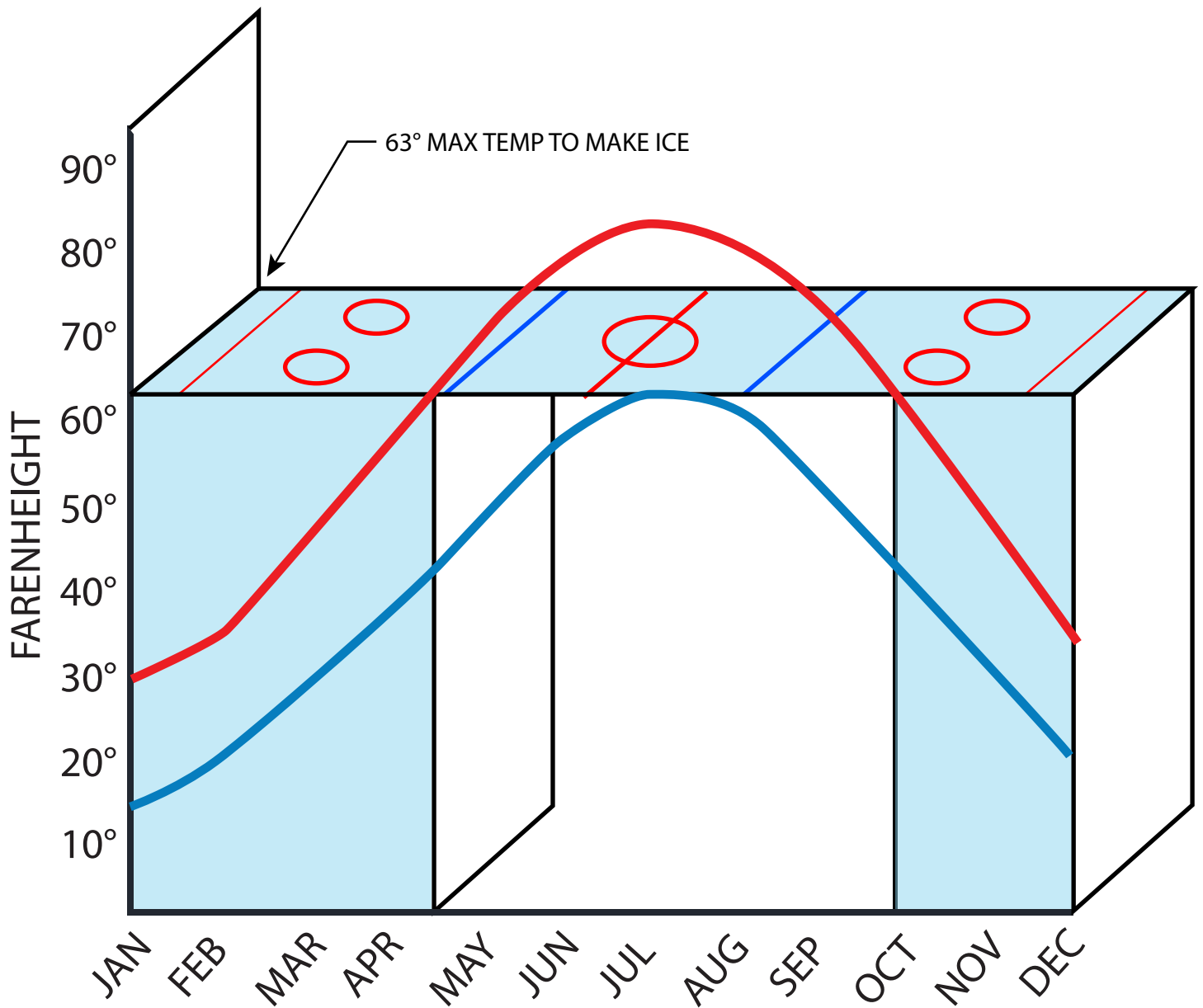
LOW ACTIVITY





# RINK SEASONS

(MIN ENERGY USED)



6 MONTHS GOOD WEATHER

6 MONTHS QUESTIONABLE WEATHER

AVERAGE HIGH TEMP

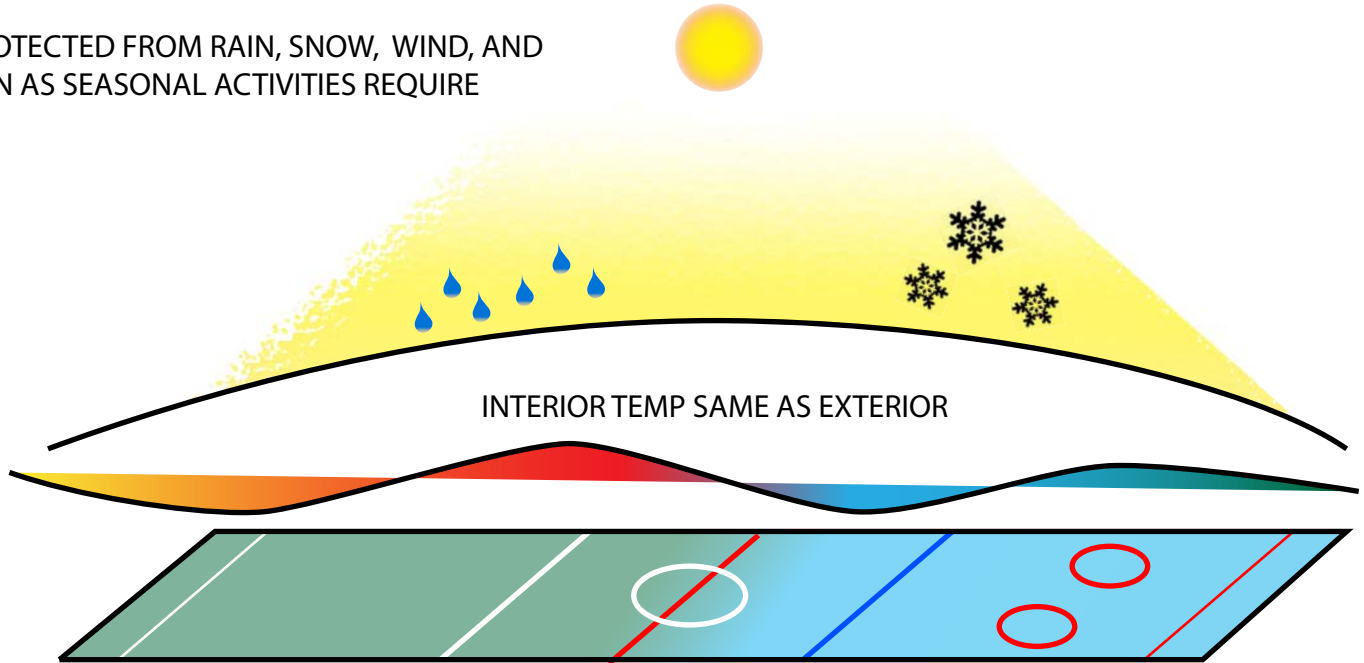


AVERAGE LOW TEMP



# MULTISEASONAL SPACE

PROTECTED FROM RAIN, SNOW, WIND, AND  
SUN AS SEASONAL ACTIVITIES REQUIRE



SUMMER

FALL

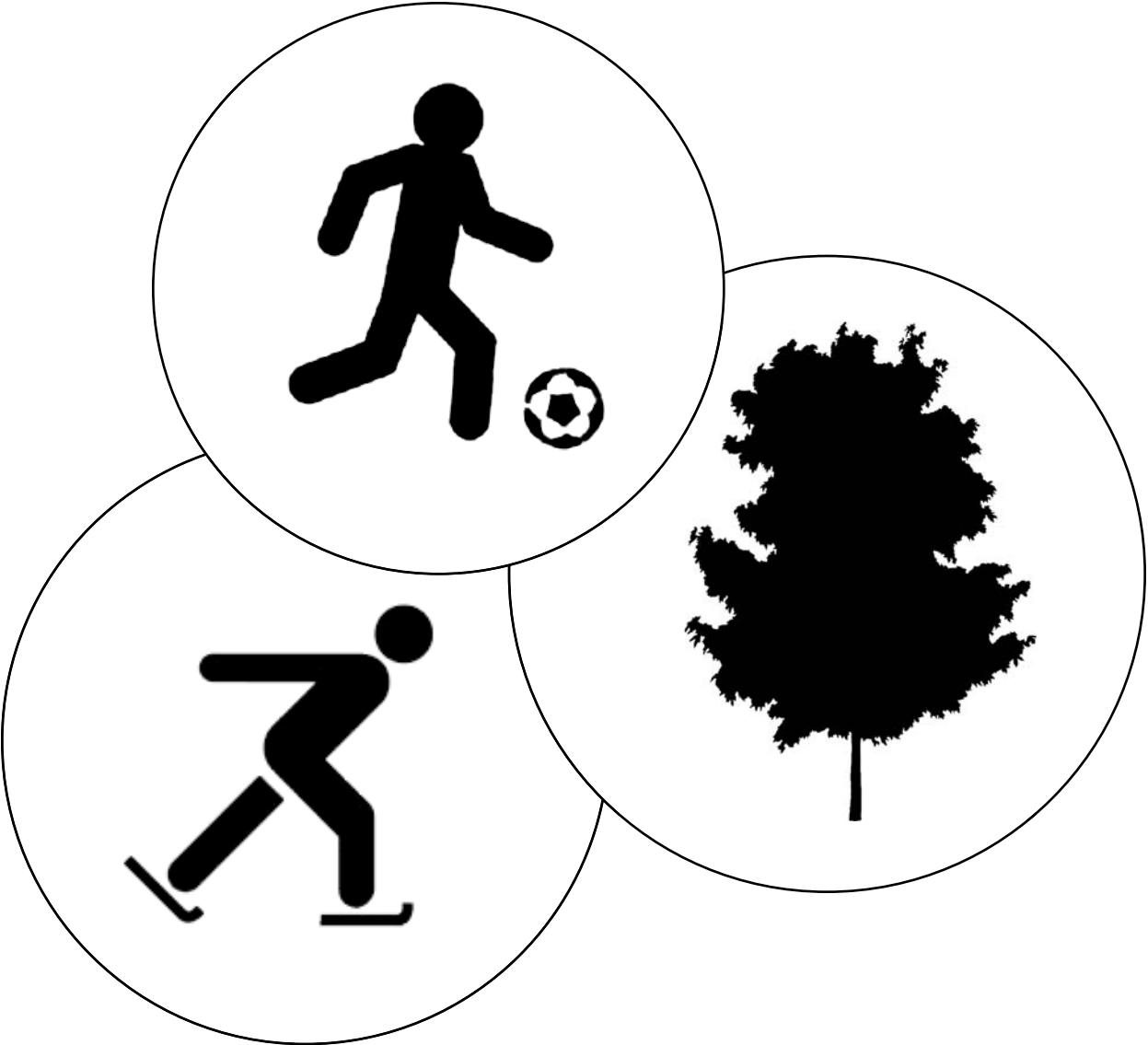
WINTER

SPRING

OPEN AIR RECREATION SPACE TO FORMALIZE SEASONAL ACTIVITIES



# PROGRAM



# STAKEHOLDERS

CHICAGO PARK DISTRICT

CHICAGO PUBLIC SCHOOLS

CALUMET CITY COMMUNITY

CHILDREN

ADULTS

ENVIRONMENT/ WILDLIFE

BUSINESSES

CHICAGOANS

TEACHERS

PARENTS

SPORTS CLUBS/ ORGANIZATIONS

DAY CARES

CTA

POLICE

MANY OF THE STAKEHOLDERS FORM THE USER BASE AND THEREFORE HAVE MUCH TO GAIN FROM THE CREATION OF THIS PROJECT



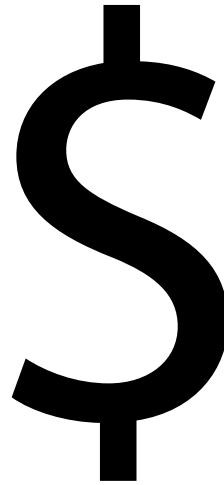
# OWNER

CITY OF CHICAGO

## SPONSORS

### PLATINUM

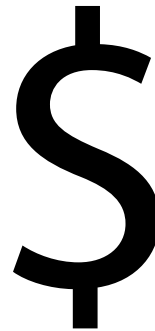
- CHICAGO PARK DISTRICT
- CHICAGO PUBLIC SCHOOLS
- CHICAGO BLACK HAWKS FOUNDATION
- CHICAGO FIRE FOUNDATION
- CHICAGO BULLS FOUNDATION
- NHL HOCKEY IS FOR EVERYONE
- NHL PLAYERS ASSOCIATION
- USA HOCKEY FOUNDATION
- GOVERNMENT FUNDED PROGRAMS



### GOLD

MEDIUM TO LARGE BUSINESSES

- STATE FARM INSURANCE
- WHITE CASTLE
- EASTON
- NIKE



### SILVER

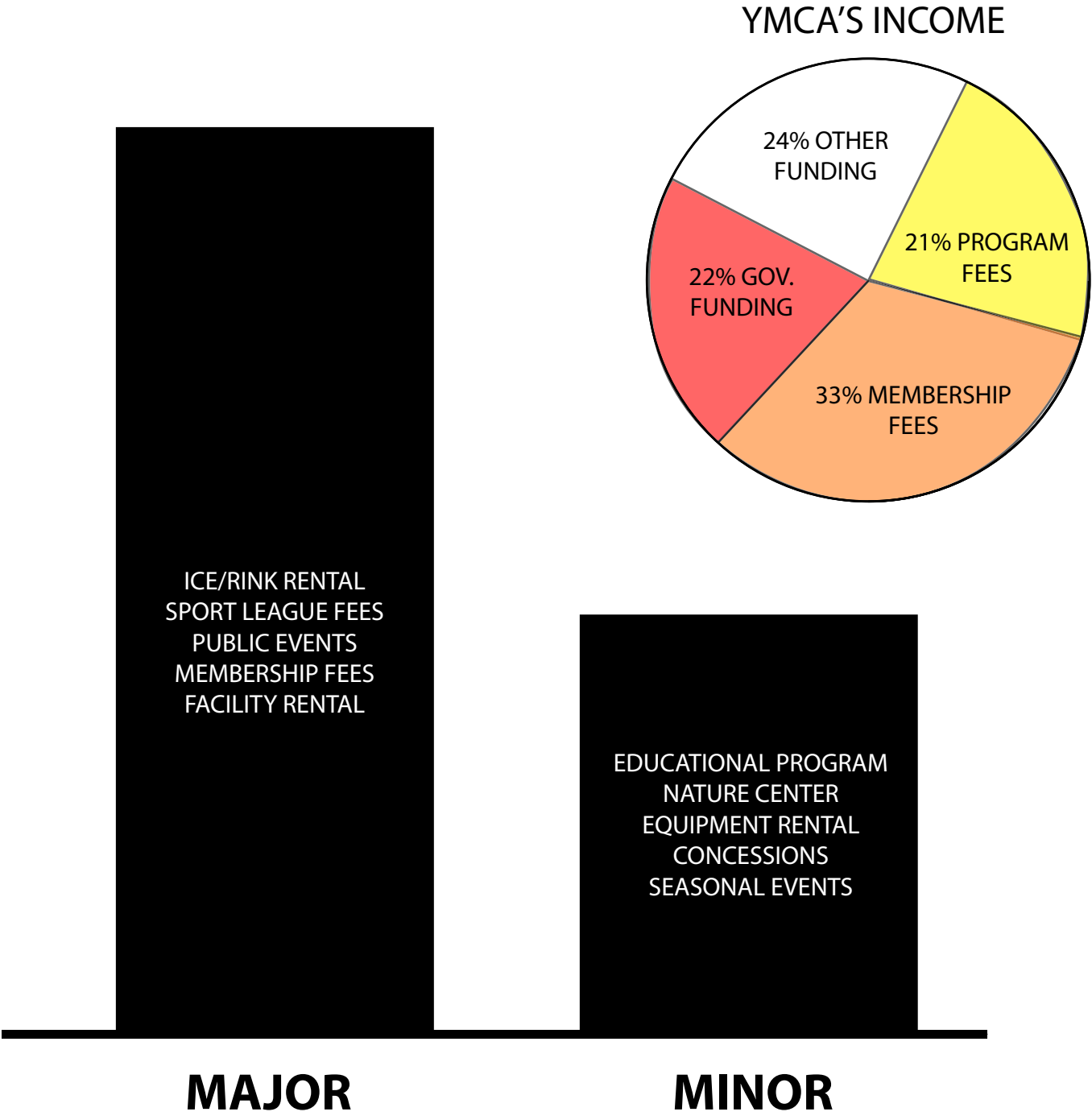
SMALL BUSINESSES

- NAPLES BAKERY
- BARACCOS PIZZA
- A & J MEAT MARKET



WHILE THE LARGEST CONTRIBUTOR TO THE CENTER WILL BE THE CITY OF CHICAGO, THERE ARE MANY ORGANIZATIONS WHICH HAVE BEEN SET UP TO PROVIDE FUNDING TO FURTHER SUPPORT AND SUPPLEMENT THIS TYPE OF FACILITY. THERE ARE ALSO AMPLE LOCAL BUSINESSES WHOM ARE LOOKING FOR WAYS TO GIVE BACK TO THE COMMUNITY

# REVENUE



MUCH OF THE YEARLY FUNDING WILL BE THROUGH THE CITY AND DONATIONS. THIS WILL BE FURTHER SUPPLEMENTED THROUGH THE PROGRAMS AT THE CENTER. THIS HAS PROVEN TO BE A SUBSTANTIAL SUM ON MONEY AS CAN BE SEEN IN THE YMCA'S ANNUAL REPORTS OF THEIR RECREATION FACILITIES



# PROGRAM

## NATURE CENTER

- CLASS ROOMS
- EXPERIMENT/ LAB AREA
- LIBRARY/ EDUCATIONAL RESOURCE
- RECEPTION
- BATHROOMS
- NATIVE ANIMAL TANK/ DISPLAY ROOM
- ADMINISTRATIVE OFFICES
- MEP ROOM

(10,000SF)

## RECREATION

- INDOOR RINK
- OUTDOOR RINK W/ CANOPY
- MULTIUSE ROOMS
- LOCKERS
- STORAGE
- OBSERVATION/ STANDS
- ADMINISTRATIVE OFFICES
- MEP ROOM
- GYM

(25,000SF)

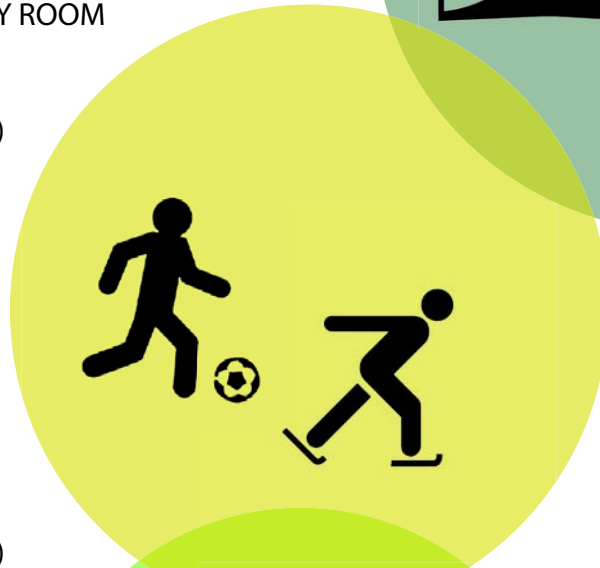
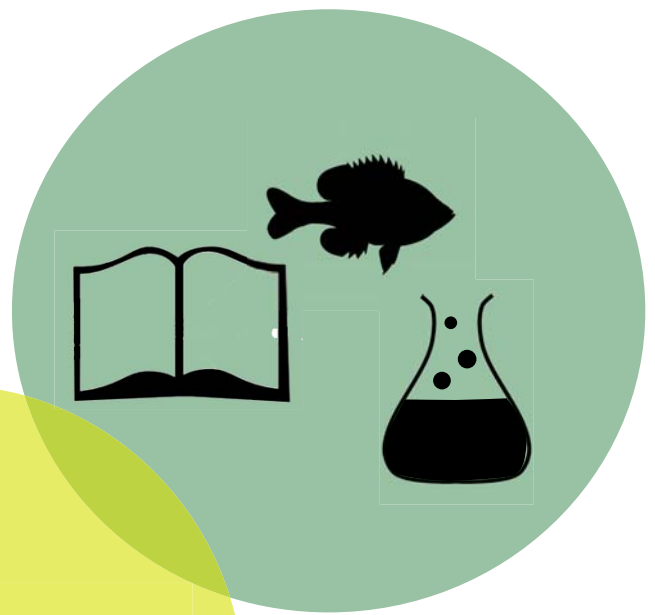
## CIRCULATION

- MAIN CIRCULATION
- PLANTED PATHWAYS
- BANQUET/ RENTABLE AREA
- LOBBY
- MAIN DESK
- EQUIPMENT RENTAL
- BATHROOMS
- CONCESSIONS
- MEP ROOM

(15,000SF)

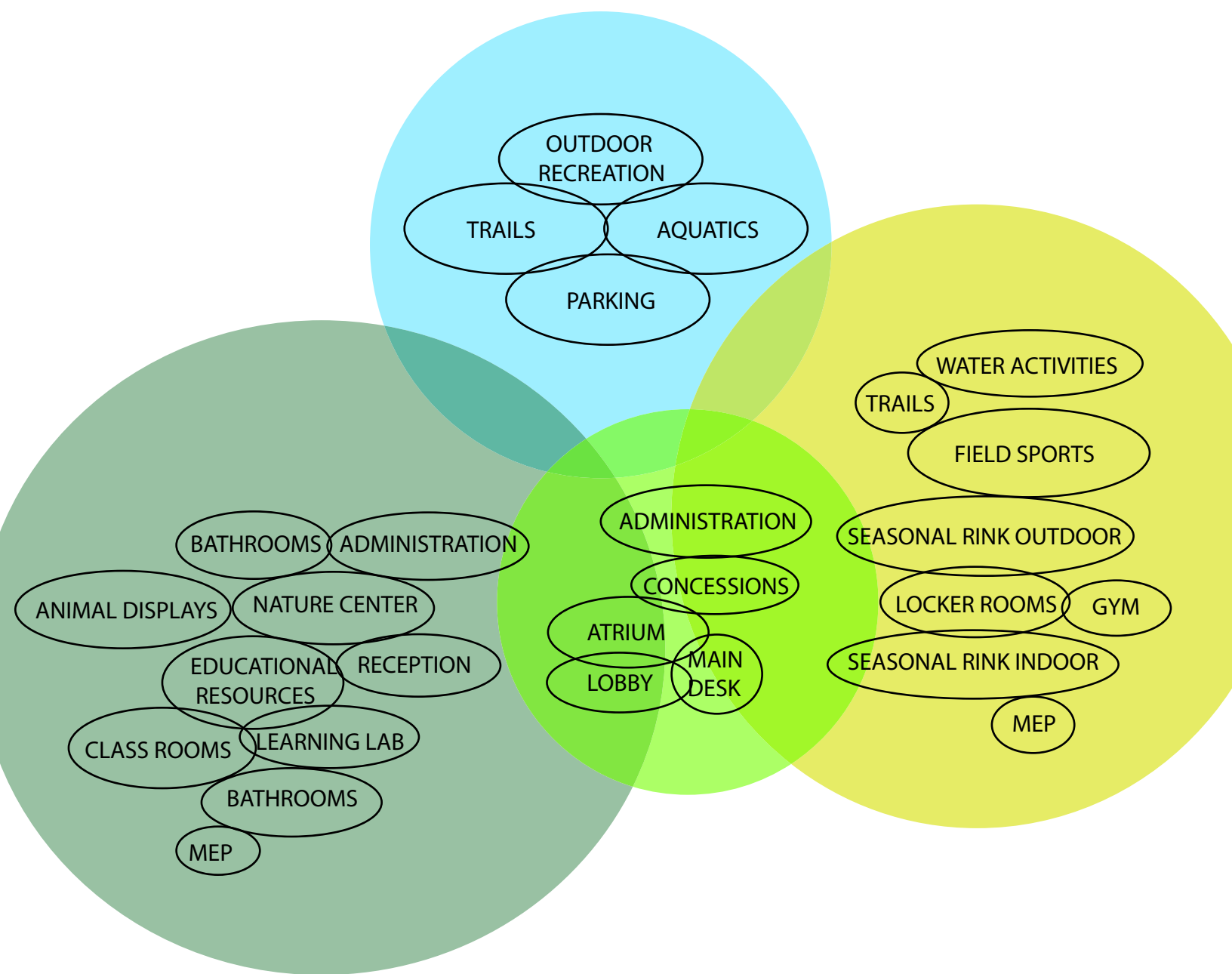
## OUTDOOR

- NATURE TRAILS/ BIKE PATHS
- PARKING
- RECREATIONAL FIELD ACTIVITIES  
(FOOTBALL, SOCCER, LACCROSS, ETC)
- POND ACTIVITIES (FISHING, SWIMMING, ICE SKATING)



THE FACILITY WILL TOTAL AROUND 50,000 SF WITH THE MAJORITY OF THE SPACE BEING WITHIN THE RINK AND CIRCULATION/ ATRIUM AREAS

# ADJACENCY



THE CIRCULATION CORE CREATES THE LINK BETWEEN ALL PROGRAMS AND ENCOURAGES THE CREATION OF AN INTERIOR ATRIUM/ WINTER GARDEN SPACE TO FACILITATE THE CENTER AS A POINT OF ENTRY AND DESTINATION



# SITE

## SITE REQUIREMENTS

- ADJACENT TO PARK AND FOREST SPACE
- ACCESS TO WATER
- CAR/ HIGHWAY ACCESS
- 1/4 MILE WALK TO PUBLIC TRANSPORTATION
- IN A COMMUNITY LACKING ACCESS TO NATURE AND RECREATION
- UNOCCUPIED LAND
- LARGE USER BASE OF ALL AGES
- NEAR SCHOOLS

CHICAGO, IL

LAKE MICHIGAN

CALUMET PARK

**SITE**

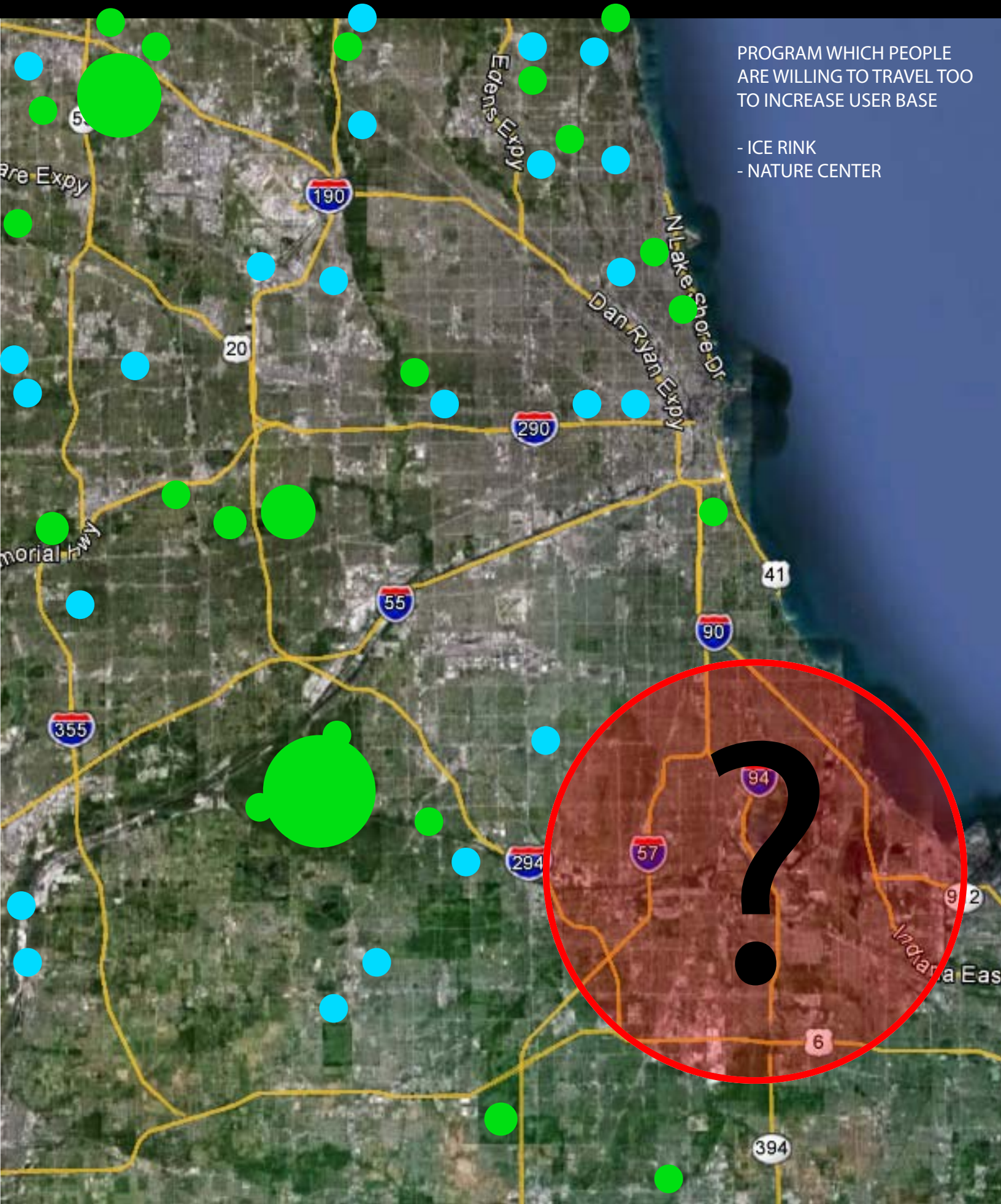
INDIANA



# DESTINATION PROGRAM

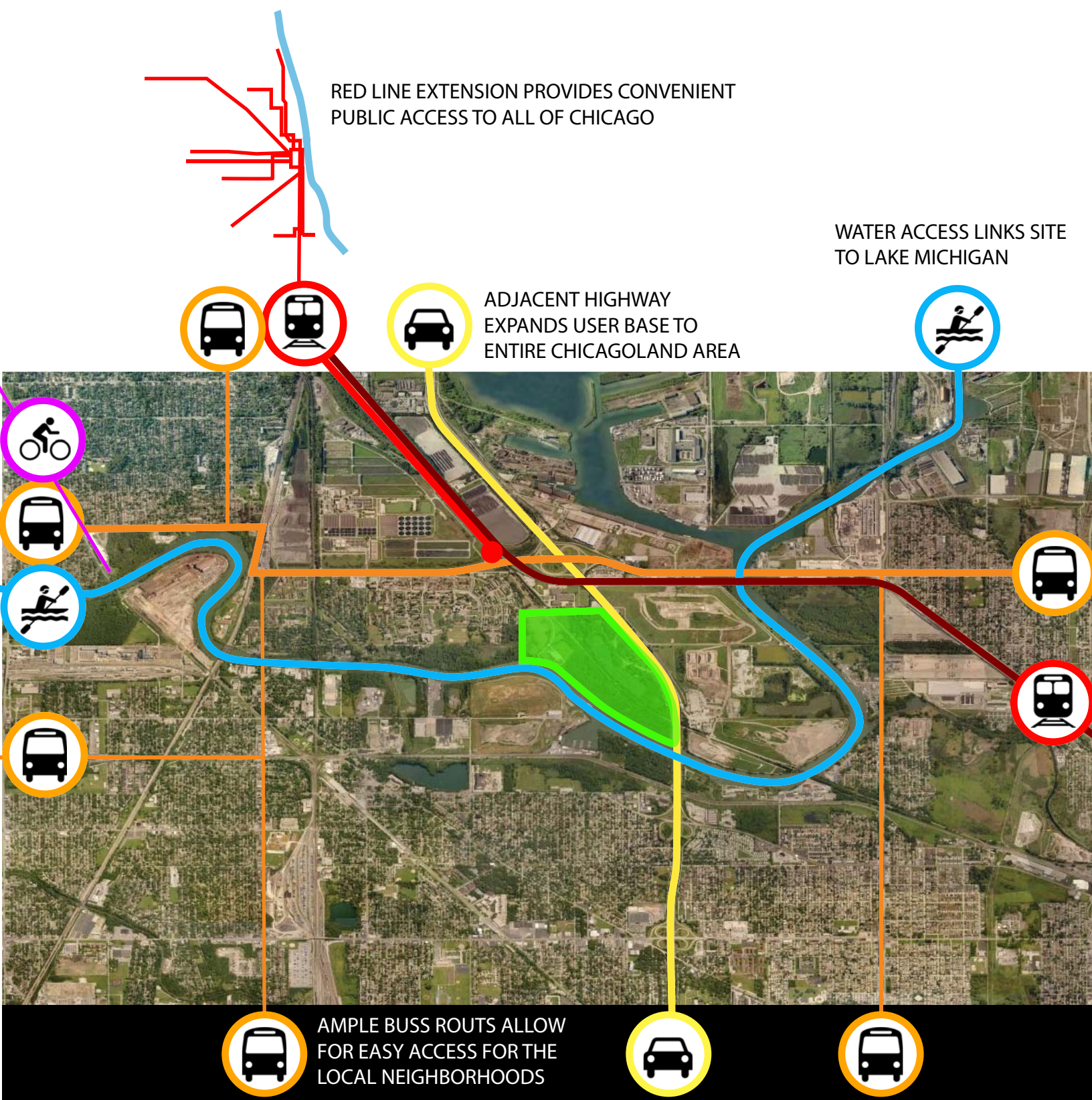
PROGRAM WHICH PEOPLE  
ARE WILLING TO TRAVEL TOO  
TO INCREASE USER BASE

- ICE RINK
- NATURE CENTER



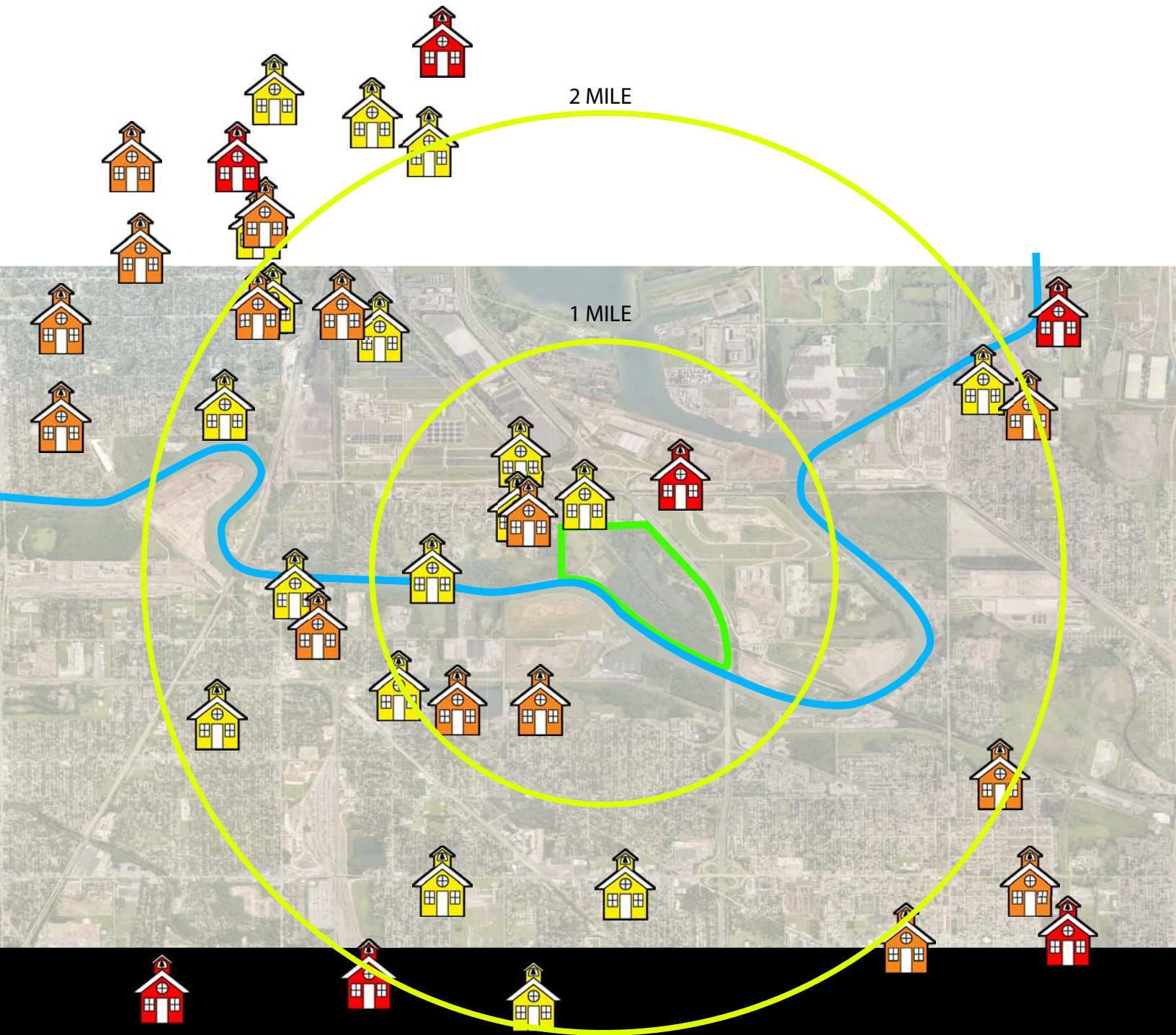


# SITE CIRCULATION





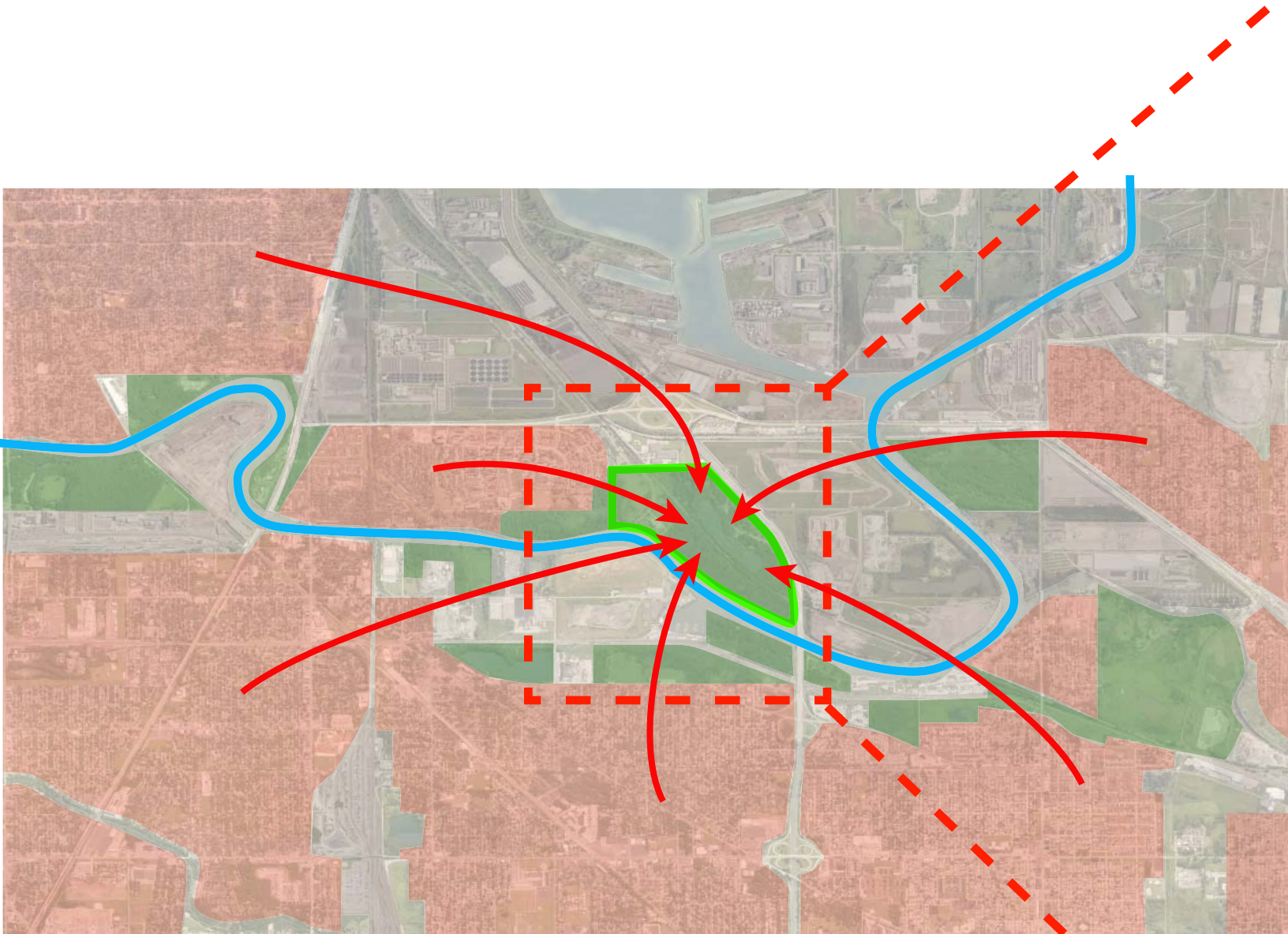
# USERS



THERE ARE HUNDREDS OF SCHOOLS, DAY CARES, AND CHURCHES WITHIN 4 MILES. ADD TO THIS THE LOCAL NEIGHBORHOODS, NEAR BY TRAVELERS, AND THE ENTIRE EL SYSTEM AND THERE IS THE POTENTIAL FOR AN EXTREMELY LARGE USER BASE WHICH DOES NOT HAVE NEARBY ACCESS TO THIS TYPE OF FACILITY



# CONTEXT



RESIDENTIAL



PARK

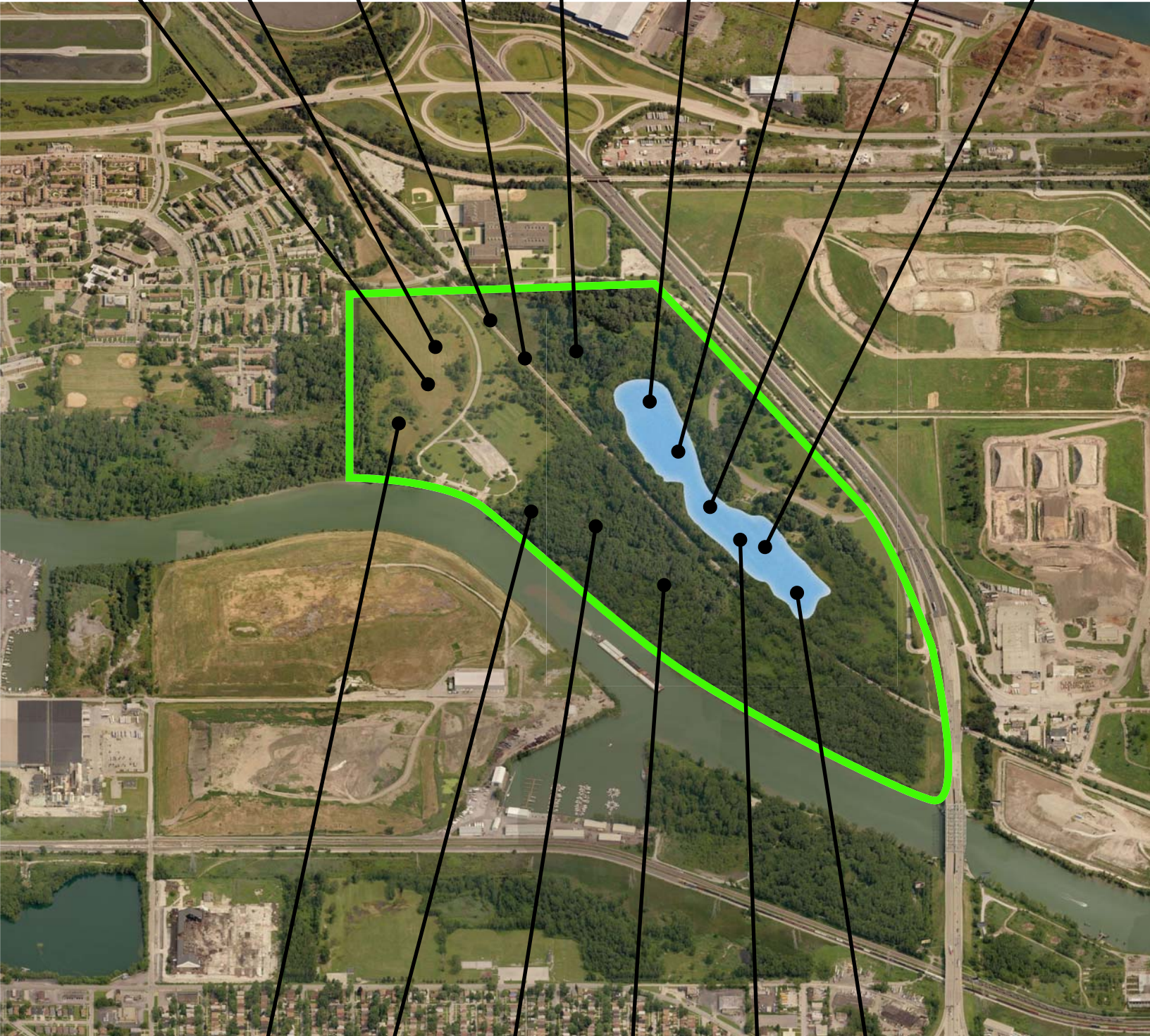


INDUSTRIAL

THE CENTERS LOCATION IS POISED TO CONNECT THE DISJOINTED COMMUNITIES OF THE CALUMET AREA AND BEGIN THE CONVERSATION OF RESTORING THE NATURAL HABITAT ON VACANT INDUSTRIAL SITES THROUGHOUT THE AREA



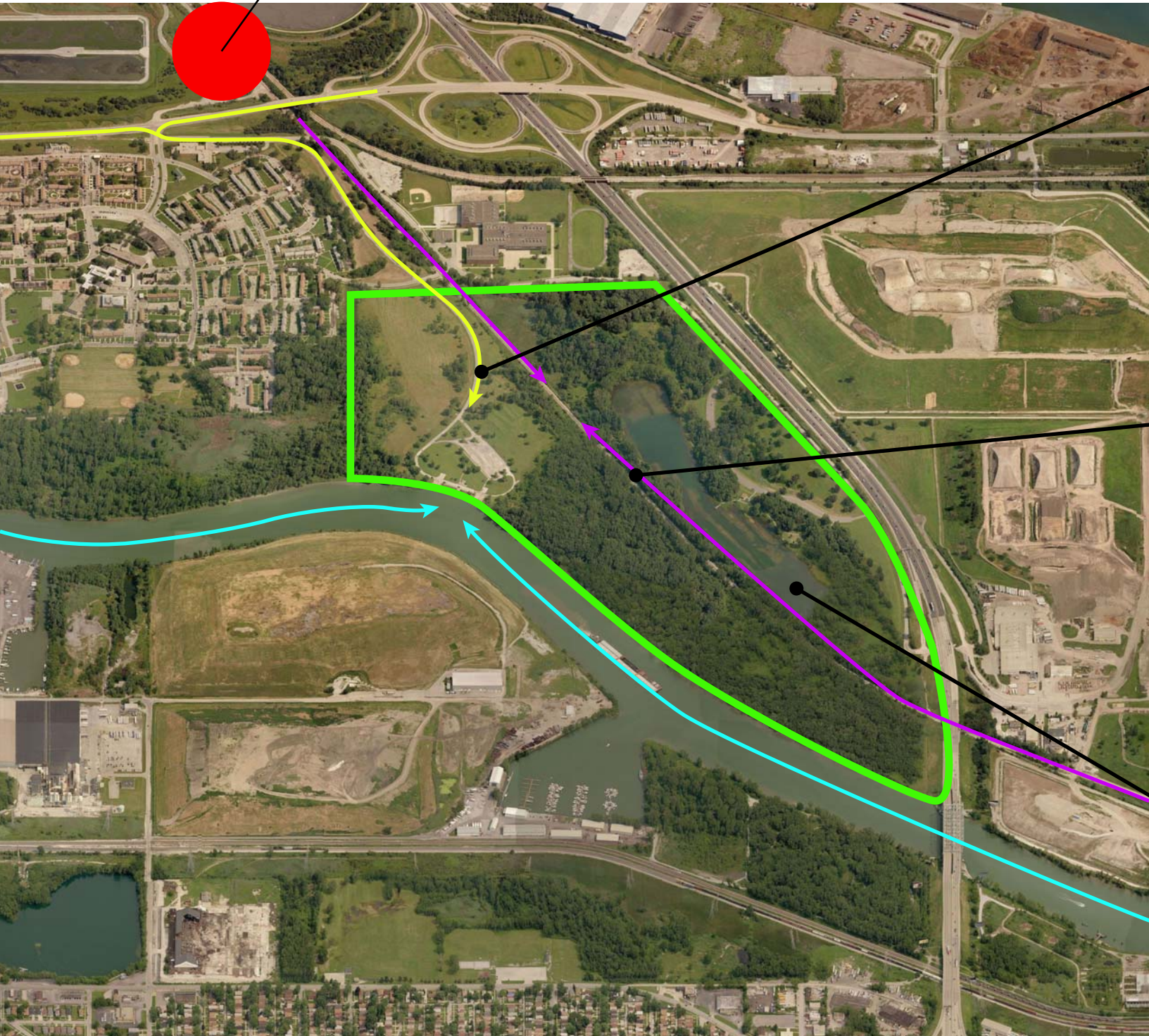
# SITE OPORTUNITIES





# SITE ACCESS

FUTURE RED LINE TERMINUS

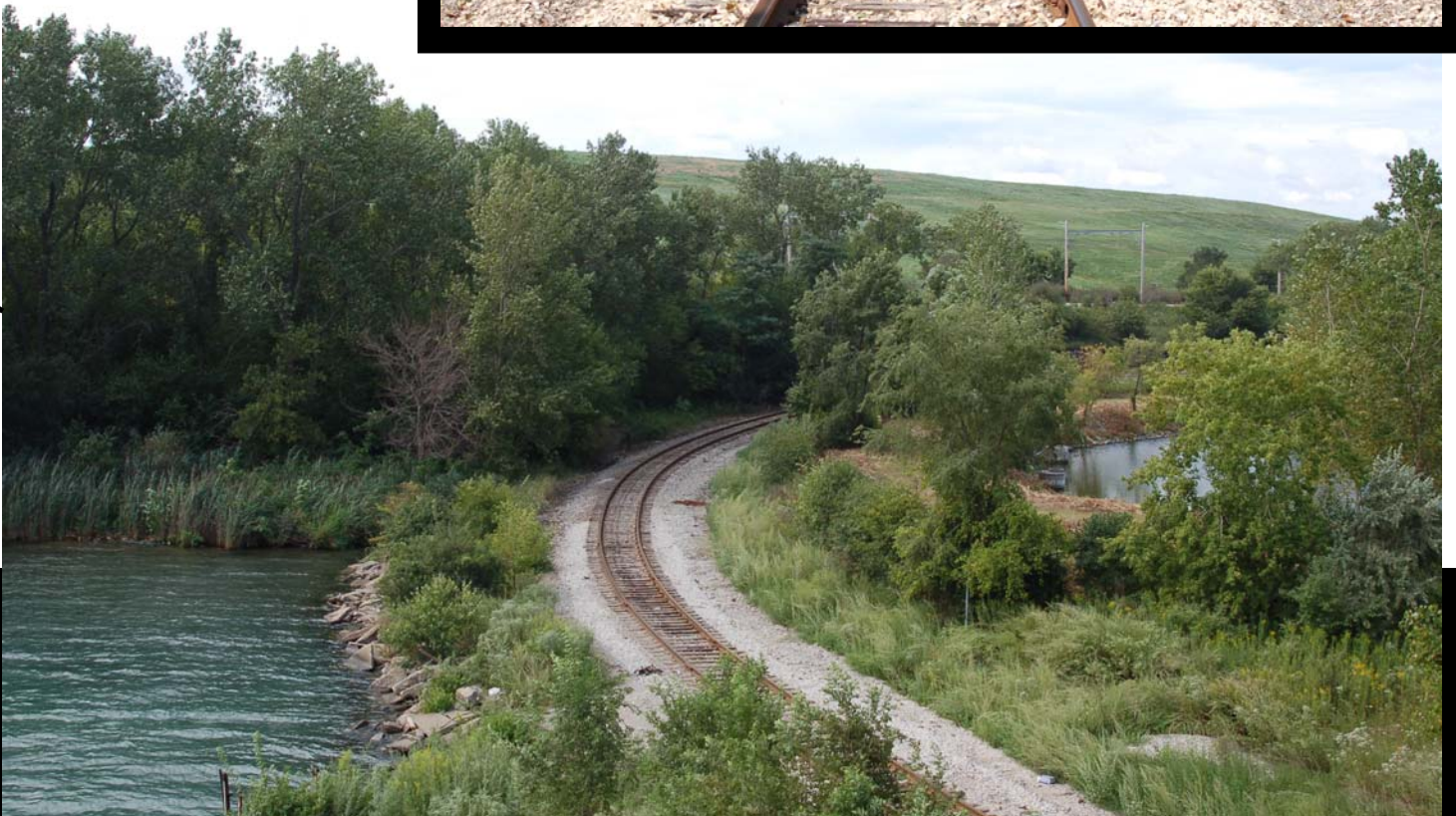






ABANDONED RAIL TRACKS  
RECLAIMED FOR NATURE TRAIL

VEHICLE ENTRY PROVIDES  
NATURAL EXPERIENCE







THE COMMUNITY CENTER IS CREATING SPACE FOR A PLETHORA OF PROGRAMS TO FACILITATE COMMUNITY ACTIVITY AND GROWTH. THE BUILDING IS DESIGNED TO BE MULTIPURPOSE IN ORDER FOR IT TO GROW AND DEVELOP WITH THE COMMUNITIES NEEDS.



# CASSIE CAMPBELL COMMUNITY CENTER

PERKINS + WILL  
BRAMPTON, ONTARIO  
165,000SF  
2008



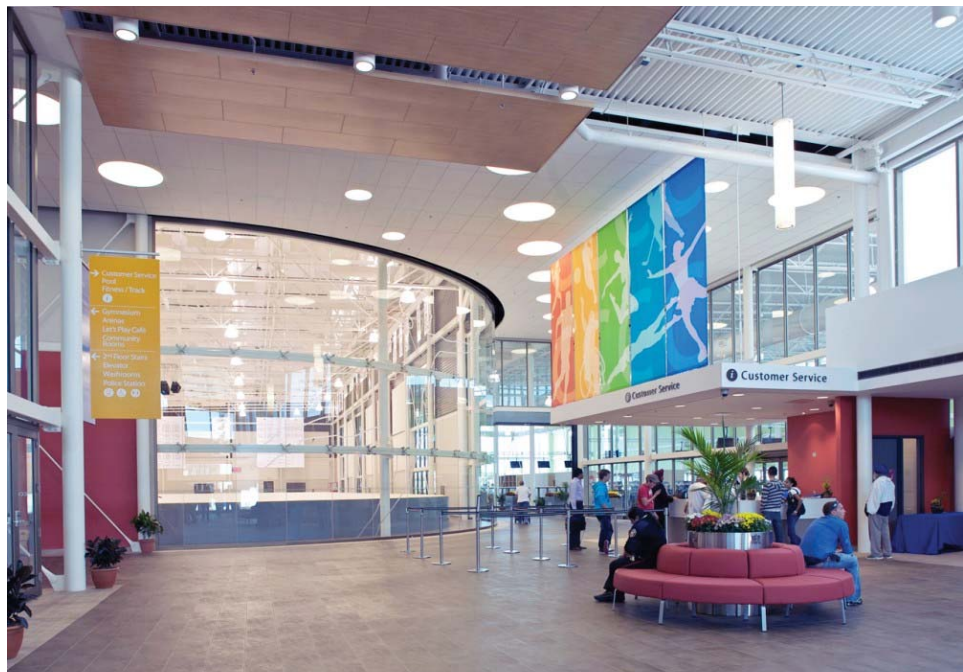
THE LOCATION OF THE COMMUNITY CENTER ALLOWS FOR IMMEDIATE ACTIVITY WHILE PROVIDING RECREATIONAL ACCESS TO FUTURE NEIGHBORHOODS TO THE WEST

- EXISTING REC CENTERS
- NEW REC CENTER

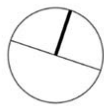
OUTDOOR PROGRAM SPACE IS UTILIZED AS AN ATTRACTANT AND TRANSITION TO THE BUILDING FROM THE STREET LEAVING THE PARKING AND DROP OFF SPACES TO THE REAR AND SIDES.



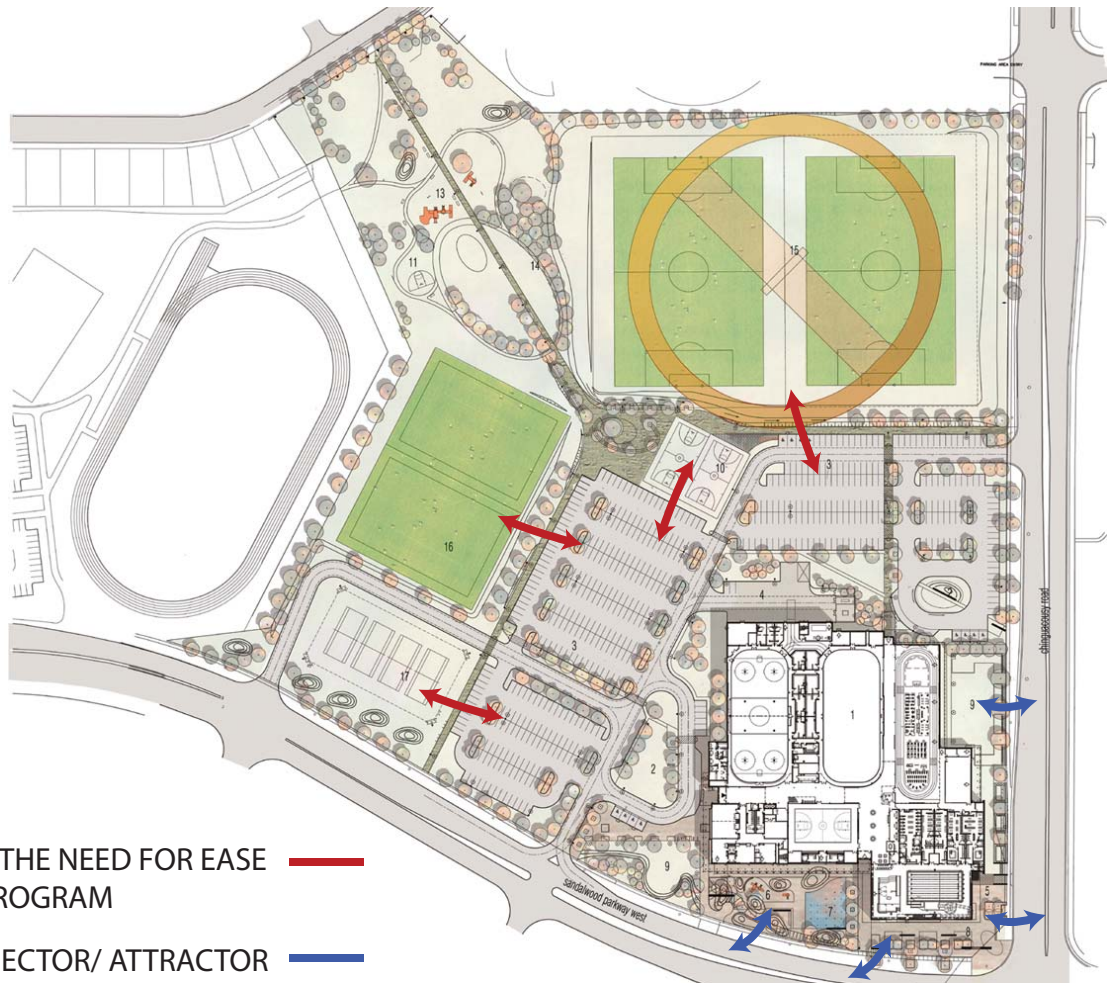






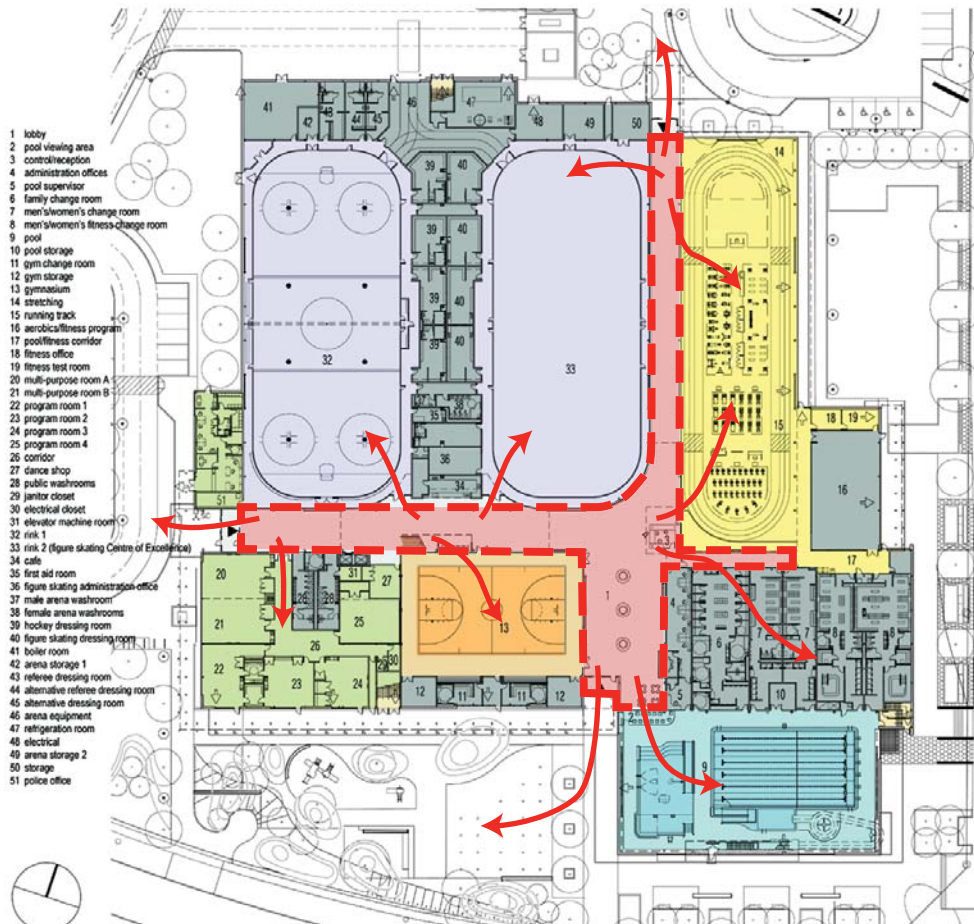


- 1 community centre
- 2 drop-off/pick-up
- 3 parking (approx. 587)
- 4 loading
- 5 pool delivery
- 6 junior play area
- 7 water play
- 8 civic plaza
- 9 landscaped area
- 10 basketball court
- 11 mini basketball court
- 12 pavilion
- 13 play structures
- 14 sod & concrete terrace
- 15 soccer/cricket pitch
- 16 soccer field
- 17 tennis courts



PARKING LAYOUT SUGGEST THE NEED FOR EASE  
OF ACCESS TO OUTDOOR PROGRAM

USING ACTIVITY AS A CONNECTOR/ ATTRACTOR



THE ATRIUM CONNECTS  
ALL PROGRAM AND  
CREATES A MULTIPURPOSE  
TRANSITIONAL SPACE





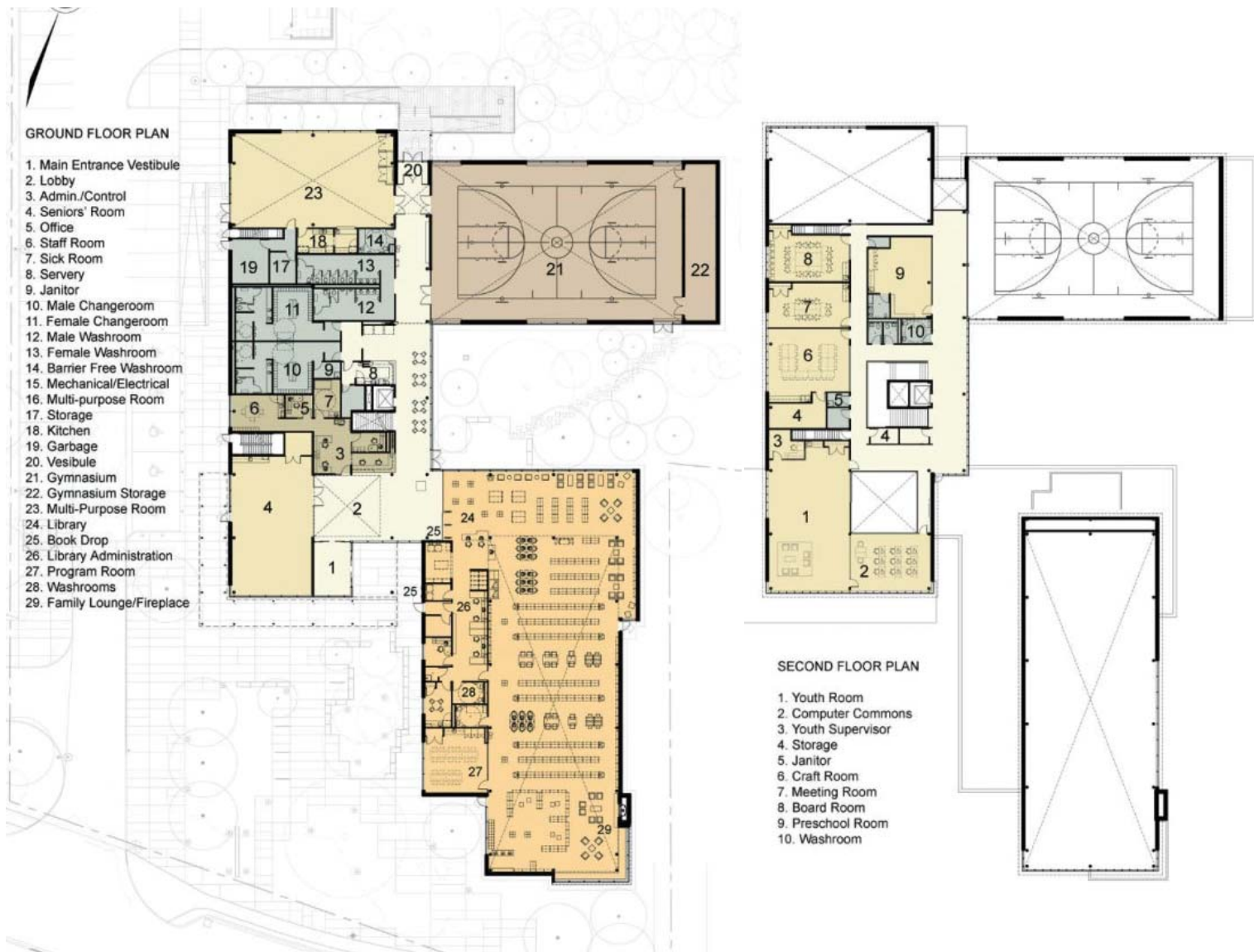
THE BLENDING OF RECREATION,  
NATURE, AND EDUCATIONAL  
PROGRAM GIVE THE COMMUNITY  
CENTER A UNIQUE OPPORTUNITY  
TO CONNECT THE PEOPLE WITH  
NATURE AND THE BUILT  
ENVIRONMENT



## BROOKLING COMMUNITY CENTER & LIBRARY

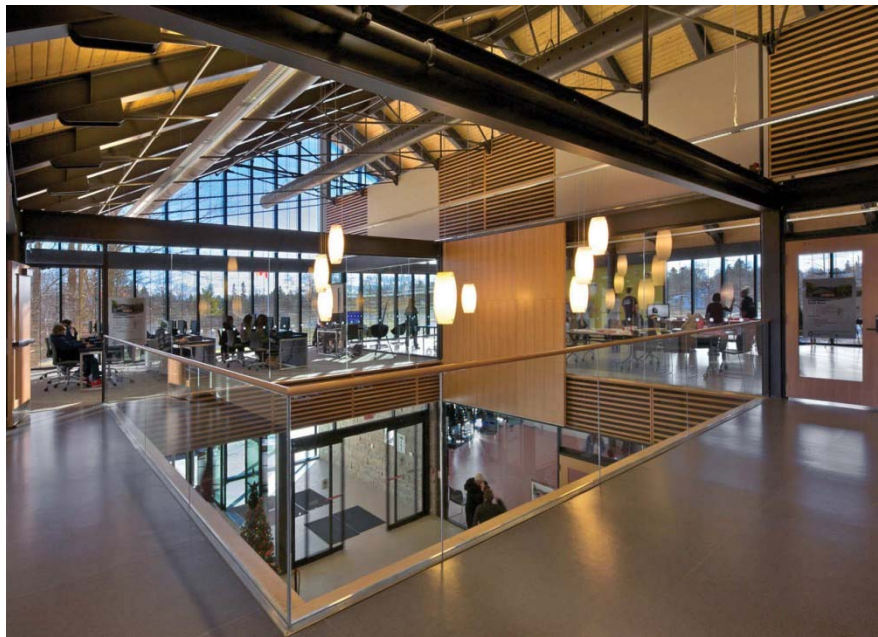
BROOKLIN, ONTARIO  
57,000SF  
2010





A LARGE MULTIPURPOSE ROOM ALLOWS FOR ENDLESS PROGRAMS TO EVOLVE WITH THE COMMUNITY





THE LIBRARY AND LOUNGE SPACES GIVE THE COMMUNITY A DESTINATION TO CONGREGATE





SOUTH ELEVATION



WEST ELEVATION

BUILDING MATERIALS WERE CHOSEN TO BLEND WITH THE SURROUNDING NATURAL ENVIRONMENT



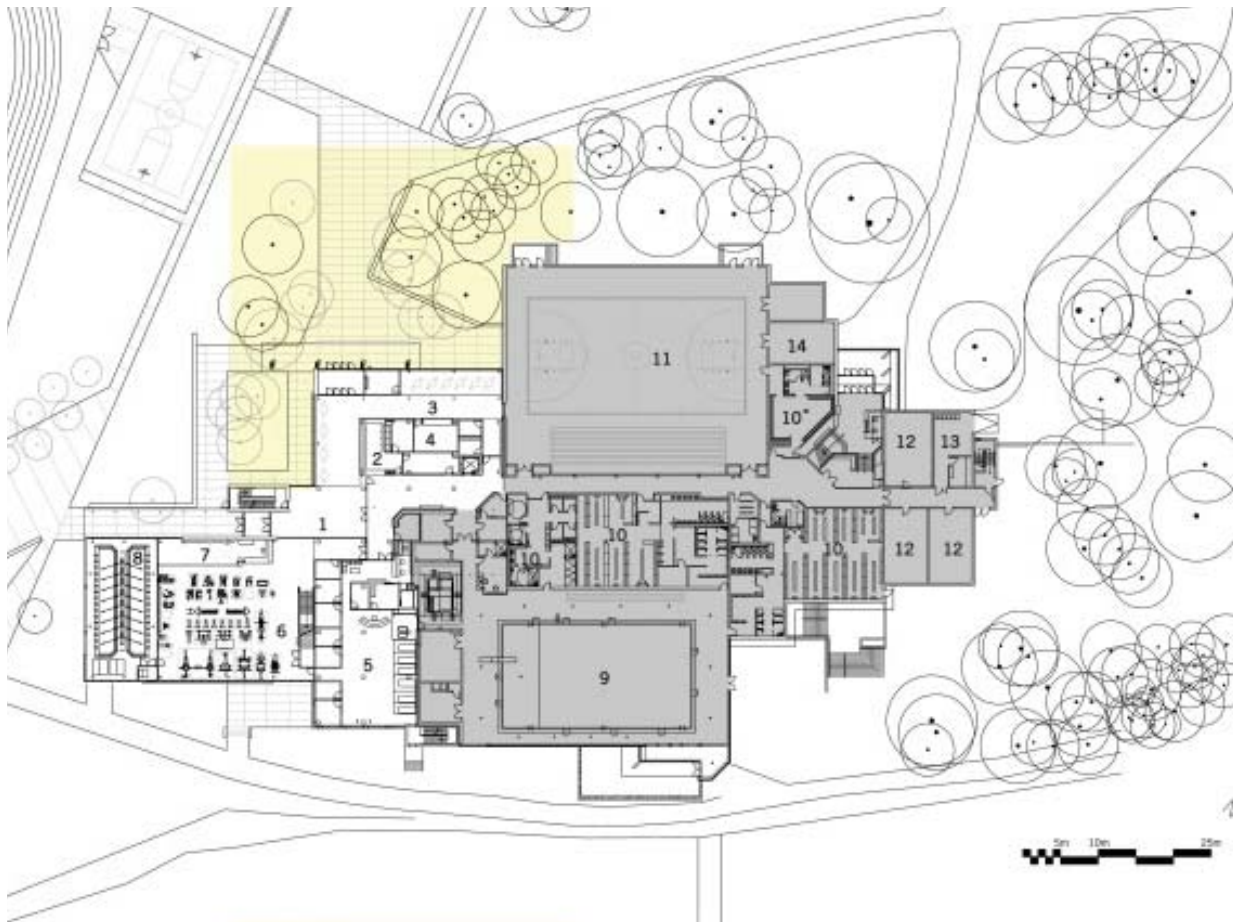


THE ATHLETICS CENTER WAS DESIGNED TO DRAW ATTENTION TO TRENT UNIVERSITY'S ATHLETICS PROGRAM AND GIVE THE FACILITY THE VISIBILITY IT NEEDED TO INCREASE USERS. MUCH OF THE BUILDING WAS DESIGNED TO MEET THEIR SUSTAINABILITY GOALS SUCH AS THE USE OF RECYCLEABLE/ SUSTAINABLE BUILDING MATERIALS AS WELL AS INTEGRATING IT WITH ITS IMMEDIATE SURROUNDINGS. THE PROJECT HAS DRAWN OTHER SPORTS ORGANIZATIONS TO THE UNIVERSITY SEEKING ITS USE.



## TRENT COMMUNITY AND RECREATION CENTRE

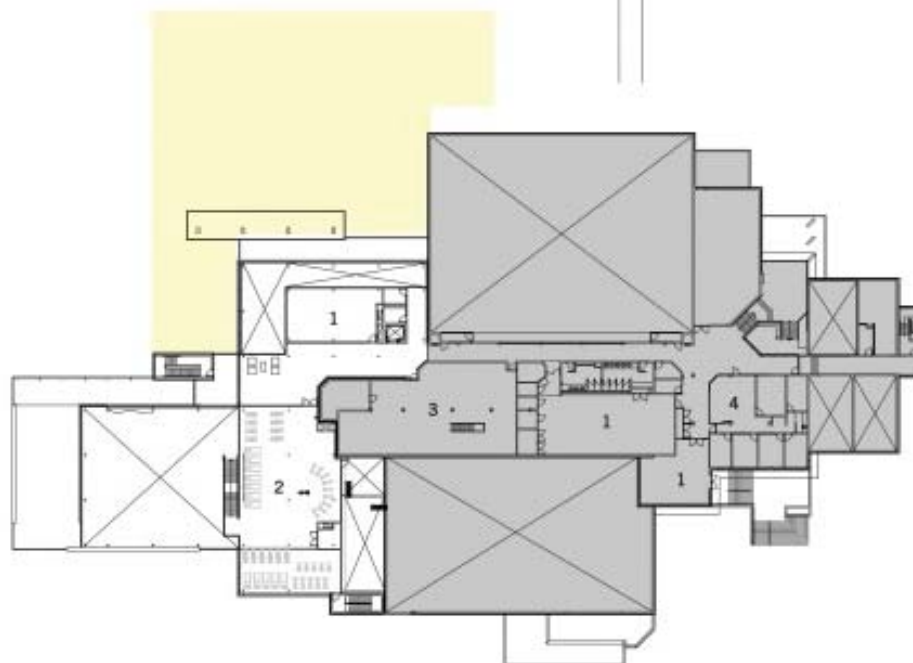
PERKINS + WILL  
ONTARIO, CANADA  
80,000 SF  
2010



#### Ground Floor

1. lobby
2. reception
3. lounge
4. cafe
5. sports medicine
6. fitness centre
7. climbing centre
8. rowing centre
9. pool
10. change room
11. gym
12. squash court
13. shipping
14. storage

future expansion



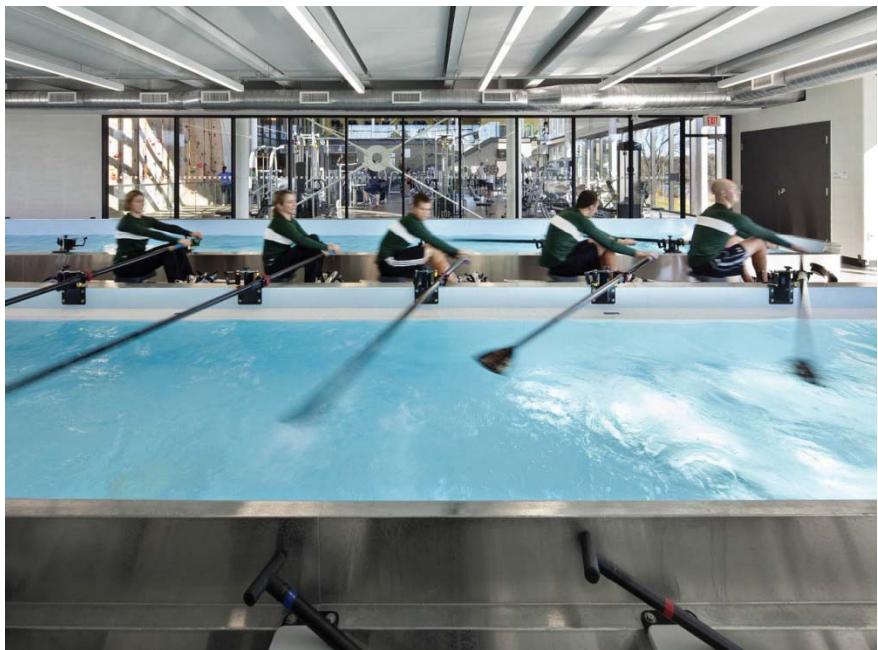
#### 2nd Floor

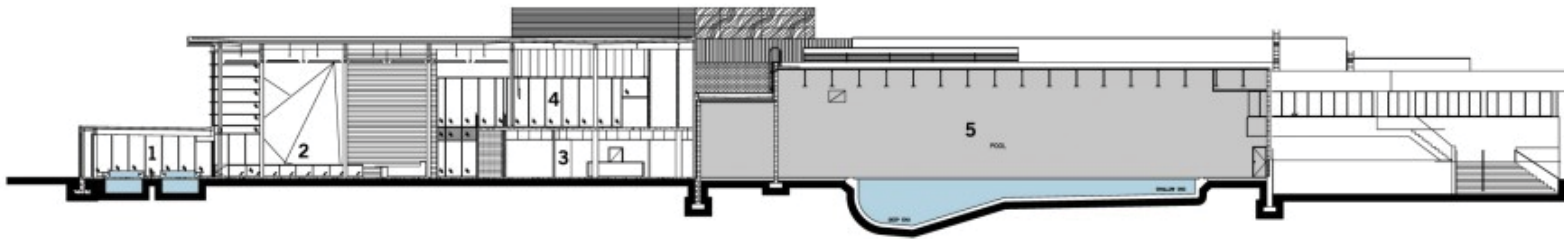
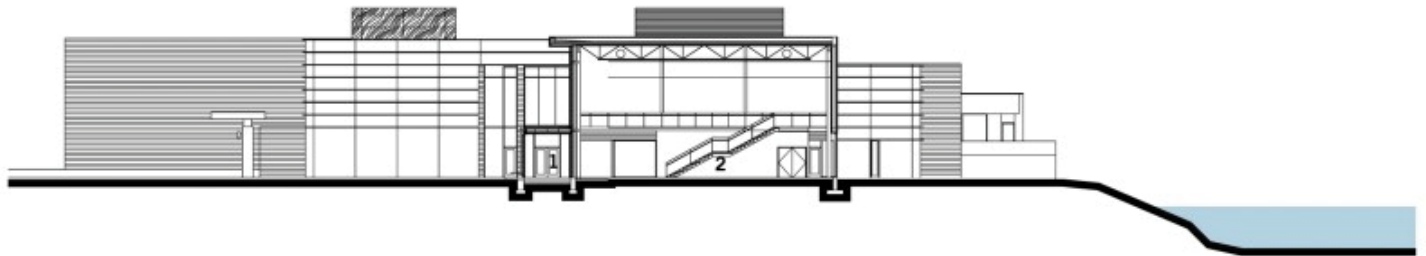
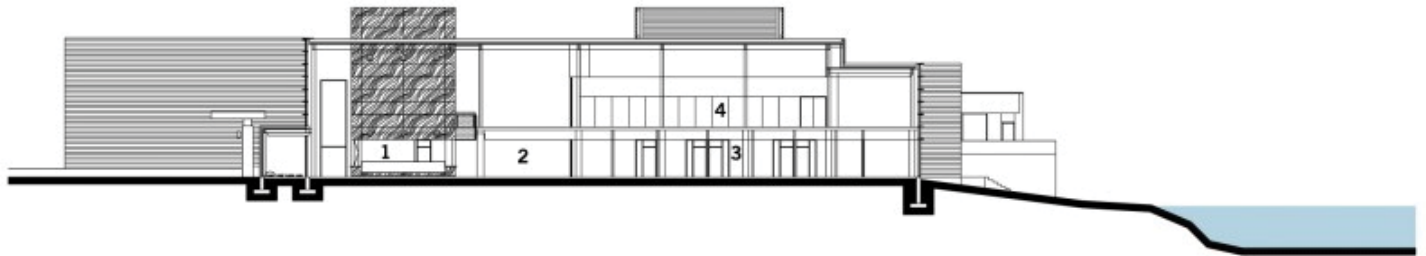
1. multi-use
2. cardio loft
3. mechanical
4. administrative

future expansion

MAJOR GOALS OF THE CENTER INCLUDE INCREASING ITS VISIBILITY, BECOMING A FOCAL POINT FOR STUDENT LIFE, AND BLENDING INDOOR AND OUTDOOR PROGRAMS





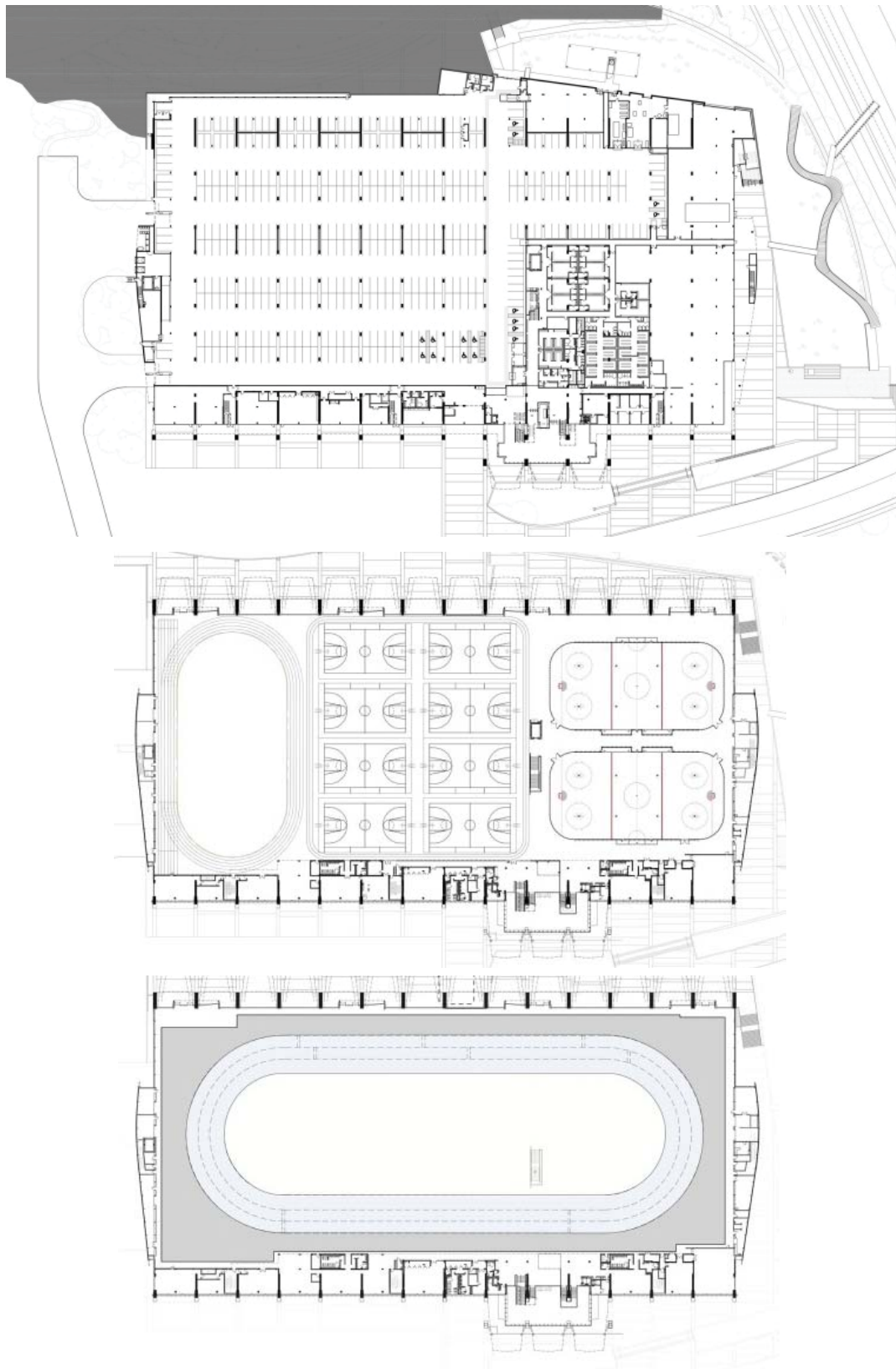






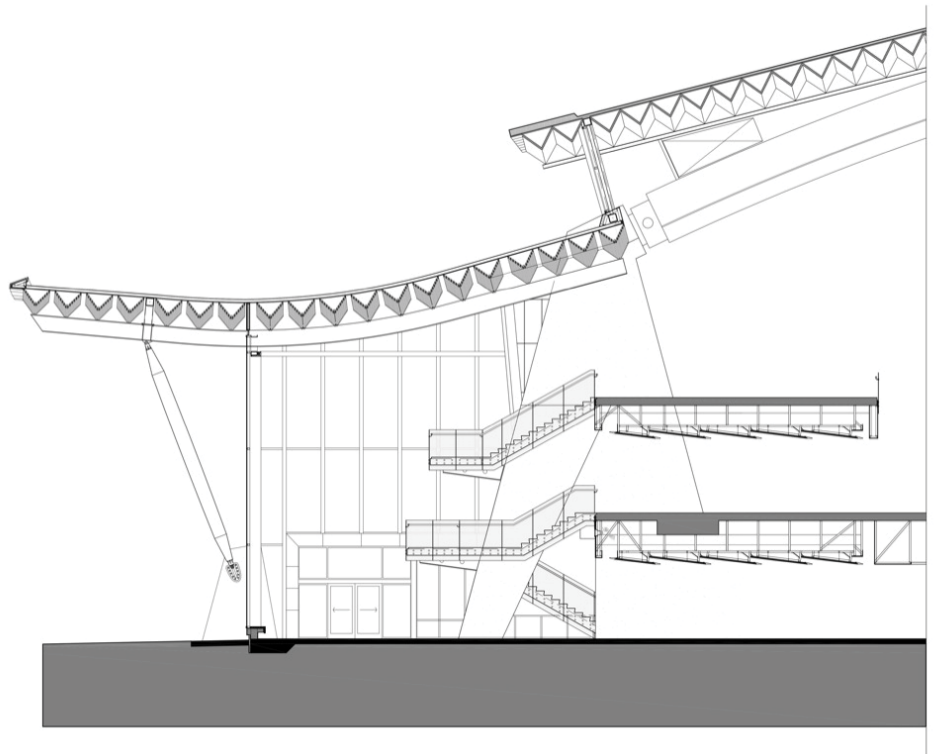
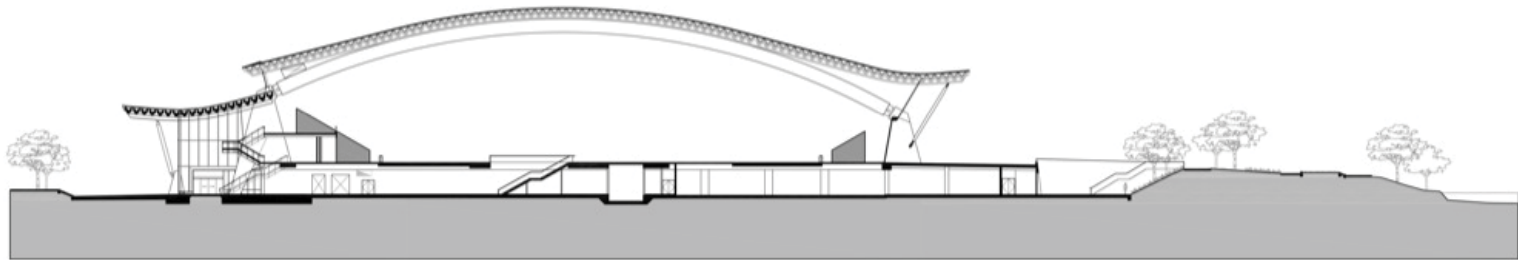
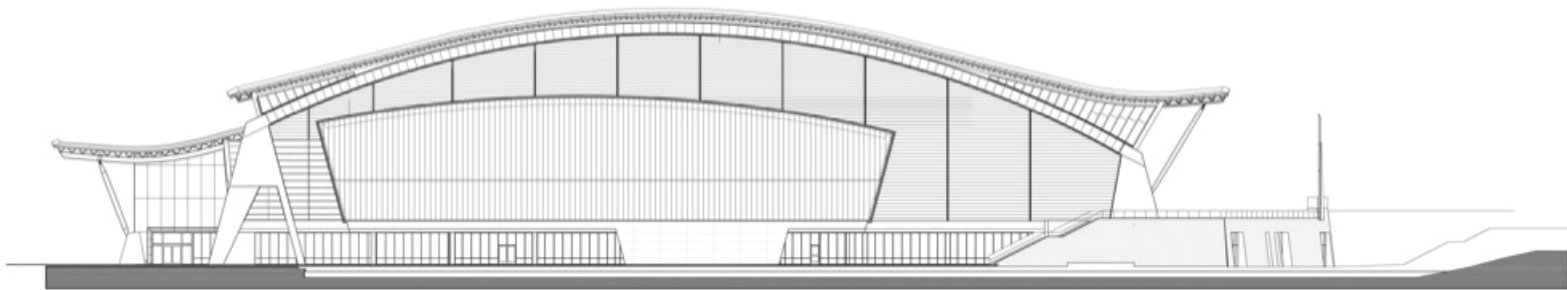
# RICHMOND OLYMPIC OVAL

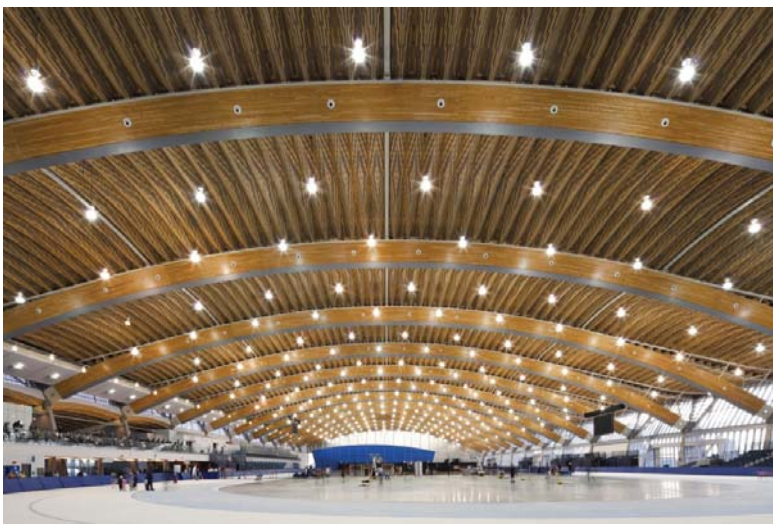
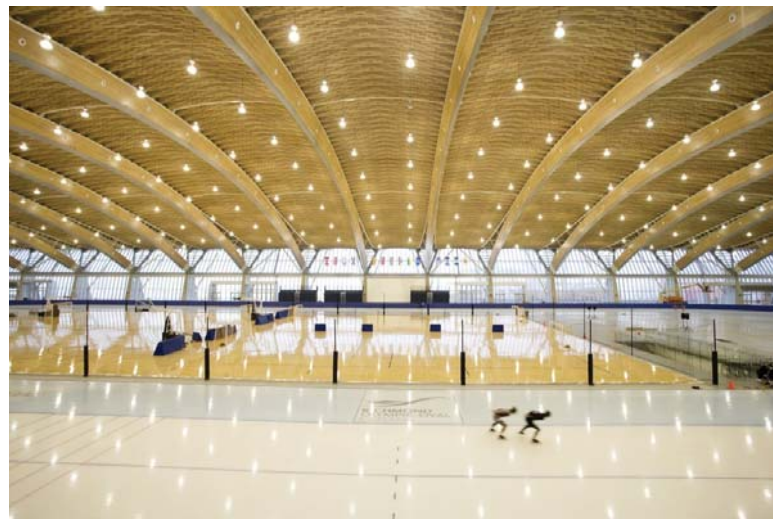
CANNON DESIGN  
VANCOUVER, CANADA  
2010



THE WIDE OPEN PLAN WAS USED TO ALLOW FOR FUTURE ADAPTATION AFTER THE OLYMPICS WERE OVER









# BIBLIOGRAPHY

GOLD, SYMOUR. RECREATION PLANNING AND DESIGN. NEW YORK: MCGRAW HILL, 1980.

FLYNN, RICHARD. PLANNING FACILITIES FOR ATHLETICS, PHYSICAL EDUCATION, AND RECREATION. N.P.: THE ATHLETIC INSTITUTE AND AMERICAN ALLIANCE FOR HEALTH, PHYSICAL EDUCATION, RECREATION, AND DANCE. 1985.

. BENGTTSSON, ARVID. ENVIRONMENTAL PLANNING FOR CHILDREN'S PLAY. NEW YORK: PRAEGER PUBLISHERS, 1970

WURMAN, SAUL, ALAN LEVY, AND JOEL KATZ. THE NATURE OF RECREATION. NEW YORK: MIT PRESS, 1972

ASENSIO, PACO. SPORTSFACILITIES. BARCELONA: LOFT PUBLICATIONS. 2005.

"Cassie Campbell Community Centre." perkinswill.com. perkinswill. Web. 09 Apr 2011

Pagnotta, Brian. Cassie Campbell Community Centre / Perkins + Will." Archdaily.com. archdaily. 27 Aug 2011. Web. 09 Apr 2011

"Brooklin Community Centre And Library." perkinswill.com. perkinswill. Web. 09 Apr 2011

Rosenberg, Andrew. "Brooklin Community Centre And Library / Perkins + Will." Archdaily.com. archdaily. 11 Mar 2011. Web. 09 Apr 2011

"Trent Community Sport and Recreation Centre." perkinswill.com. perkinswill. Web. 09/09/2011

Rosenberg, Andrew. "Trent Community Sport and Recreation Centre / Perkins + Will." Archdaily.com. archdaily. 08 Mar 2011. Web. 09 Apr 2011

Summerweb. U.S. Climate Data. The National Climatic Data Center. Web. 09 Apr 2011

*Dan.Dellinger@noaa.gov*. Snowfall - Average Total In Inches. NCDC. 20 Aug 2008. Web. 09 Apr 2011.